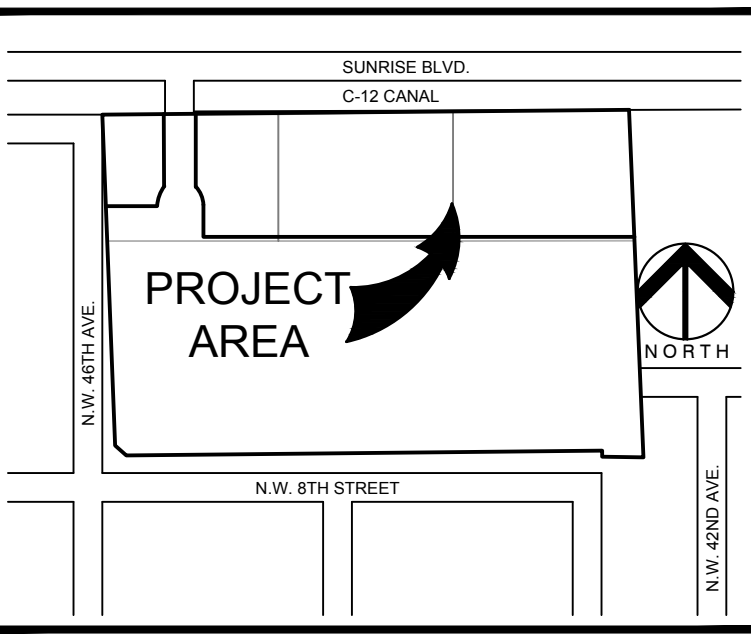
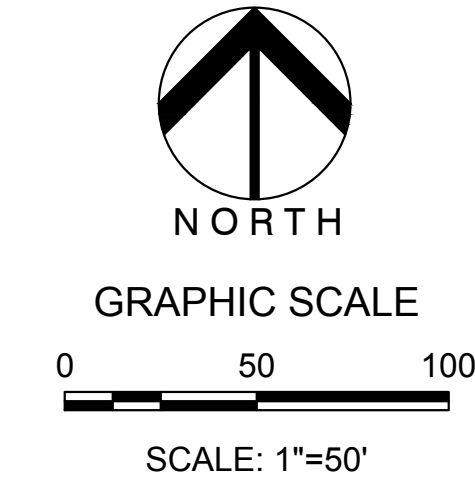


- NOTES:**
- Existing trees to remain shall be trimmed per ANSI-A300 standards, removing weakest rubbing branches and dead branches, but retaining 80% of foliage. Large trees shall have lower branches cleared up to 8'.
  - Symbols may be shown offset from actual tree location for clarity.
  - Contact Landscape Architect / ISA Certified Arborist for clarification on any discrepancies.
  - Trimming and any necessary root pruning shall be performed or supervised by a Certified Arborist.
  - All tree work requires permitting by a registered County tree trimmer.
  - Bubblers shall be provided for all relocated trees and palms.
  - Removal of any trees or palms will require a written "tree removal permit" from the local governing agency prior to removal. Confirm with local governing agency that trees classified as nuisance/exotic invasive may be exempt.
  - All trees and plant material to remain shall be protected during construction. Refer to tree protection detail. The contractor shall take extra caution to prevent any damage to the trunk, root zones, and grade.

- NOTE:**
- ALL TREES TO REMAIN ON SITE SHALL BE PROTECTIVELY BARRICADED PRIOR TO AND THROUGHOUT CONSTRUCTION.
  - PROVIDE TREE PROTECTION BARRIER PER THE ATTACHED DETAIL AROUND ALL EXISTING TREES WITHIN AND ADJACENT TO THE CONSTRUCTION ZONE.

**TREE DISPOSITION LEGEND:**

	Existing Tree/Palm to Remain without disposition symbol
	Existing Tree/Palm to Relocate
	Existing Tree/Palm to Remove
	Existing Tree/Palm number



- NOTE:**
- AERIAL PHOTOGRAPH IS THE MOST CURRENTLY AVAILABLE; HOWEVER IT DOES NOT REFLECT THE CLEARING OF THE SITE THAT HAS OCCURRED AS PART OF PHASE 2 OF STRATA CONSTRUCTION. THE ONLY TREES REMAINING ON SITE ARE THOSE NOTED ON THE TREE DISPOSITION LIST AND LABELED ON THE TREE DISPOSITION PLAN.

**KEITH**

301 East Atlantic Boulevard  
Pompano Beach, Florida 33060-6643

2160 NW 82nd Avenue  
Doral, Florida 33122

PH: (954) 788-3400

Florida Certificate of  
Authorization # - 7928

**BID / CONTRACT NO. :**

NO.	DESCRIPTION	DATE
1	PER DRC COMMENTS	03/06/2019

**REVISIONS**

NO.	DESCRIPTION	DATE
1	PER DRC COMMENTS	03/06/2019

**PRELIMINARY PLAN  
NOT FOR CONSTRUCTION**

RESPONSIBILITY FOR THE USE OF THESE PLANS PRIOR TO OBTAINING PERMITS FROM ALL AGENCIES HAVING JURISDICTION OVER THE PROJECT WILL FALL SOLELY UPON THE USER.

**INVESCA**

**PIXL**

4400 NW 8th CT  
PLANTATION, FL 33317

SCALE: AS NOTED  
DATE ISSUED: NOVEMBER, 2017  
DRAWN BY: SR  
DESIGNED BY: PW  
CHECKED BY: PW

**REGISTERED LANDSCAPE ARCHITECT**

PAUL WEINBERG, PLA  
FLORIDA REG. NO. LA666804  
(FOR THE FIRM)

03/06/19

**SHEET TITLE**

**TREE DISPOSITION PLAN**

**SHEET NUMBER**

**LD-101**

**CITY COMMISSION SUBMITTAL**

PROJECT NO. **08808.01**

TREE DISPOSITION TABLE			PROJECT #: 08808.01				PROJECT NAME: PIXL			
TREE #	TREE NAME	SCIENTIFIC NAME	DBH	HT.	CNPLY.	TREE	TREE	TREE	COMMENTS	
			IN.	FT.	FT.	CONDITION	DISPOSITION	APPRAISAL		
1	Live oak	"Quercus virginiana"	26	25	25	70%	REMAIN	SEE PREVIOUS APPRAISED VALUE	NEEDS CORRECTIVE PRUNING	
2	Live oak	"Quercus virginiana"	15	22	15	50%	REMOVE	SEE PREVIOUS APPRAISED VALUE	SHADED, POOR PRUNING	
3	Live oak	"Quercus virginiana"	18	30	30	70%	RELOCATE	SEE PREVIOUS APPRAISED VALUE	INCLUDED BARK, SUCKERS	
4	Live oak	"Quercus virginiana"	16	22	22		REMOVE	SEE PREVIOUS APPRAISED VALUE	DEAD	
5	Live oak	"Quercus virginiana"		30	33	50%	REMOVE	SEE PREVIOUS APPRAISED VALUE	NO CENTRAL LEADER, DIE BACK	
6	Live oak	"Quercus virginiana"	20	20	30	40%	REMOVE	SEE PREVIOUS APPRAISED VALUE	DUAL LEADER, INCLUDED BARK	
7	Live oak	"Quercus virginiana"	8	15	15		REMOVE	SEE PREVIOUS APPRAISED VALUE	DEAD	
8	Live oak	"Quercus virginiana"	30	30	30		REMOVE	SEE PREVIOUS APPRAISED VALUE	DEAD	
9	Live oak	"Quercus virginiana"	10	22	15	40%	REMOVE	SEE PREVIOUS APPRAISED VALUE	DECLINING, DIEBACK	
10	Live oak	"Quercus virginiana"	30	30	30		REMOVE	SEE PREVIOUS APPRAISED VALUE	DEAD	
11	Live oak	"Quercus virginiana"	15	22	28	65%	RELOCATE	SEE PREVIOUS APPRAISED VALUE		
12	Live oak	"Quercus virginiana"					REMOVE	SEE PREVIOUS APPRAISED VALUE	DEAD	
13	Live oak	"Quercus virginiana"	13	25	28	40%	REMOVE	SEE PREVIOUS APPRAISED VALUE		
14	Live oak	"Quercus virginiana"	24	30	35	65%	RELOCATE	SEE PREVIOUS APPRAISED VALUE	DUAL LEADER, INCLUDED BARK	
15	Live oak	"Quercus virginiana"	25	30	40		REMOVE	SEE PREVIOUS APPRAISED VALUE	DEAD	
16	Live oak	"Quercus virginiana"		30	30	40%	REMOVE	SEE PREVIOUS APPRAISED VALUE	INCLUDED BARK	
17	Live oak	"Quercus virginiana"	12	18	25	65%	RELOCATE	SEE PREVIOUS APPRAISED VALUE		
18	Live oak	"Quercus virginiana"	14	25	29	65%	RELOCATE	SEE PREVIOUS APPRAISED VALUE		
19	Live oak	"Quercus virginiana"	8	18	19	65%	RELOCATE	SEE PREVIOUS APPRAISED VALUE		
20	Bald Cypress	"Taxodium distichum"	9	25	20	55%	REMOVE	SEE PREVIOUS APPRAISED VALUE	DIE BACK, BRANCH DAMAGE	
21	Live oak	"Quercus virginiana"	7	18	16	60%	REMOVE	SEE PREVIOUS APPRAISED VALUE	INCLUDED BARK, BRANCH DAMAGE	
22	Live oak	"Quercus virginiana"	10	22	25	65%	REMOVE	SEE PREVIOUS APPRAISED VALUE	INCLUDED BARK, BRANCH DAMAGE	
23	Live oak	"Quercus virginiana"	14	32	30	65%	REMOVE	SEE PREVIOUS APPRAISED VALUE	INCLUDED BARK, BRANCH DAMAGE	
24	Live oak	"Quercus virginiana"	10	20	20	65%	REMOVE	SEE PREVIOUS APPRAISED VALUE	INCLUDED BARK, BRANCH DAMAGE	
25	Live oak	"Quercus virginiana"	16	30	35	65%	REMOVE	SEE PREVIOUS APPRAISED VALUE	INCLUDED BARK, BRANCH DAMAGE, DIE BACK	
26	Cabbage palm	"Sabal palmetto"		24' c.t.	10	75%	REMAIN		OFF-PROPERTY	
27	Cabbage palm	"Sabal palmetto"		20' c.t.	10	75%	REMAIN		OFF-PROPERTY	
28	Cabbage palm	"Sabal palmetto"		15' c.t.	10	75%	REMAIN		OFF-PROPERTY	
28A	Cabbage palm	"Sabal palmetto"		23' c.t.	10	75%	REMAIN		OFF-PROPERTY	
29	Cabbage palm	"Sabal palmetto"		17' c.t.	10	75%	REMAIN		OFF-PROPERTY	
30	Cabbage palm	"Sabal palmetto"		23' c.t.	10	75%	REMAIN		OFF-PROPERTY	

TREE #	TREE NAME	SCIENTIFIC NAME	DBH IN.	HT. FT.	CNPLY. FT.	TREE CONDITION	TREE DISPOSITION	COMMENTS
31	False tamarind	"Lysiloma Latissiliquum"	6	20	20	70%	REMAIN	OFF-PROPERTY
32	Cabbage palm	"Sabal palmetto"		22' c.t.	10	75%	REMAIN	OFF-PROPERTY
33	Cabbage palm	"Sabal palmetto"		22' c.t.	10	75%	REMAIN	OFF-PROPERTY
34	Cabbage palm	"Sabal palmetto"		25' c.t.	10	75%	REMAIN	OFF-PROPERTY
35	Cabbage palm	"Sabal palmetto"		22' c.t.	10	75%	REMAIN	OFF-PROPERTY
36	Cabbage palm	"Sabal palmetto"		25' c.t.	10	75%	REMAIN	OFF-PROPERTY
37	Cabbage palm	"Sabal palmetto"		26' c.t.	10	75%	REMAIN	OFF-PROPERTY
38	Cabbage palm	"Sabal palmetto"		22' c.t.	10	75%	REMAIN	OFF-PROPERTY
39	Cabbage palm	"Sabal palmetto"		27' c.t.	10	75%	REMAIN	OFF-PROPERTY
40	Cabbage palm	"Sabal palmetto"		25' c.t.	10	75%	REMAIN	OFF-PROPERTY
41	Cabbage palm	"Sabal palmetto"		25' c.t.	10	75%	REMAIN	OFF-PROPERTY
42	Gumbo limbo	"Bursera simaruba"	9	18	15	75%	REMAIN	OFF-PROPERTY
43	Cabbage palm	"Sabal palmetto"		25' c.t.	10	70%	REMAIN	OFF-PROPERTY, LEANING
44	Gumbo limbo	"Bursera simaruba"	9	10	5	50%	REMAIN	OFF-PROPERTY, POOR CANOPY, POOR PRUNING
45	Gumbo limbo	"Bursera simaruba"	9	22	20	75%	REMAIN	OFF-PROPERTY
46	Cabbage palm	"Sabal palmetto"		15' c.t.	10	75%	REMAIN	OFF-PROPERTY
47	Cabbage palm	"Sabal palmetto"		20' c.t.	10	75%	REMAIN	OFF-PROPERTY
48	Cabbage palm	"Sabal palmetto"		18' c.t.	10	75%	REMAIN	OFF-PROPERTY
49	Cabbage palm	"Sabal palmetto"		18' c.t.	10	75%	REMAIN	OFF-PROPERTY
50	Cabbage palm	"Sabal palmetto"		14' c.t.	10	75%	REMAIN	OFF-PROPERTY
51	Cabbage palm	"Sabal palmetto"		25' c.t.	10	75%	REMAIN	OFF-PROPERTY
52	Cabbage palm	"Sabal palmetto"		25' c.t.	10	75%	REMAIN	OFF-PROPERTY
53	Cabbage palm	"Sabal palmetto"		25' c.t.	10	75%	REMAIN	OFF-PROPERTY
54	Cabbage palm	"Sabal palmetto"		25' c.t.	10	75%	REMAIN	OFF-PROPERTY
55	Cabbage palm	"Sabal palmetto"		25' c.t.	10	75%	REMAIN	OFF-PROPERTY
57	Cabbage palm	"Sabal palmetto"		25' c.t.	10	75%	REMAIN	OFF-PROPERTY
58	False tamarind	"Lysiloma Latissiliquum"	8	22	18	70%	REMAIN	OFF-PROPERTY
59	False tamarind	"Lysiloma Latissiliquum"	8	12	5	50%	REMAIN	OFF-PROPERTY, NO CANOPY
60	Cabbage palm	"Sabal palmetto"		16' c.t.	10	75%	REMAIN	OFF-PROPERTY
61	Cabbage palm	"Sabal palmetto"		20' c.t.	10	75%	REMAIN	OFF-PROPERTY
62	Cabbage palm	"Sabal palmetto"		20' c.t.	10	75%	REMAIN	OFF-PROPERTY
63	Cabbage palm	"Sabal palmetto"		20' c.t.	10	75%	REMAIN	OFF-PROPERTY





301 East Atlantic Boulevard  
Pompano Beach, Florida 33060-6643

2160 NW 82<sup>nd</sup> Avenue  
Doral, Florida 33122

PH: (954) 788-3400

Florida Certificate of  
Authorization # - 7928

BID / CONTRACT NO. :		
REVISIONS		
NO.	DESCRIPTION	DATE
△	PER DRC COMMENTS	03/06/2019
PRELIMINARY PLAN NOT FOR CONSTRUCTION		
RESPONSIBILITY FOR THE USE OF THESE PLANS PRIOR TO OBTAINING PERMITS FROM ALL AGENCIES HAVING JURISDICTION OVER THE PROJECT WILL FALL SOLELY UPON THE USER.		

4400 NW 8th CT  
PLANTATION, FL 33317

SCALE:	AS NOTED
DATE ISSUED:	NOVEMBER, 2017
DRAWN BY:	SR
DESIGNED BY:	PW
CHECKED BY:	PW

PAUL WEINBERG, PLA  
FLORIDA REG. NO. LA666804  
(FOR THE FIRM)

SHEET TITLE

EXISTING TREE  
EXHIBIT  
(NORTH PERIMETER)

SHEET NUMBER

LD-102

CITY COMMISSION SUBMITTAL

PROJECT NO. 08808.01

Drawing name: N:\08\0808.01 - PIXL (Strata Phase 2) - Invesca Landscape Architecture\Gardens\0808.01 - LD-101.dwg    Layout Name: LD-102    Plotted on: Mar 06, 2019 - 9:34am    Plotted by: Steven



CITY OF PLANTATION - LANDSCAPE REQUIREMENTS									
[CODE OF ORDINANCES, CHAPTER 13, LANDSCAPING, ARTICLE III, STANDARDS AND SPECIFICATIONS]									
VEHICULAR USE AREAS [SEC. 47-21.9 LANDSCAPING REQUIREMENTS FOR VEHICULAR USE AREAS]									
TOTAL SITE AREA:	290,770	S.F.	=	6.68	ACRES				
VUA AREA:	33,387	S.F.	=	0.77	ACRES				
SECONDARY VUA:	1,388	S.F.	=	0.03	ACRES				
INTERIOR LANDSCAPE FOR PARKING AREAS:						REQUIRED		PROVIDED	
[SEC. 13-40 INTERIOR LANDSCAPING FOR PARKING AREAS]									
(a) VUA LANDSCAPE REQUIRED (15% OF VUA, EXCLUDES VEHICLE OVERHANG)				5,008	S.F.			12,302	S.F.
SECONDARY VUA LANDSCAPE: (10% OF THE FIRST 50,000 SF, PLUS 5% IN EXCESS OF THAT AMOUNT)						139	S.F.		
(f) PARKING AREA TREES:									
1 SHADE TREE PER 40 L.F.	310	L.F. OF PARKING		8	TREES			11	TREES
PEDESTRIAN ZONE ALONG BUILDING FACADES						REQUIRED		PROVIDED	
[SEC. 13-41 PEDESTRIAN ZONES ALONG BUILDING FACADES]									
(a)(b) LANDSCAPE PEDESTRIAN ZONE (DEPTH BASED ON BUILDING HEIGHT)									
BUILDING HEIGHT:	88	HT				44	L.F. DEPTH	140	L.F. DEPTH
>60' HT, MIN. 30% HT, MAX. 50% HT.									
(MAY BE ADMINISTRATIVELY REDUCED BY 10% IN LIMITED AREAS)									
PAVED AREA: (LESSER OF MAX. 50% LPZ OR 6')				6	L.F. MAX			VARIES	L.F.
(c) LPZ TREES:									
1 TREE PER 30 L.F. OF FAÇADE	718	L.F.		24	TREES			49	TREES
(d) PALMS MAY BE SUBSTITUTED AT 3:1								11	PALMS
(f) REQUIRED TREE HEIGHTS:									
25% TREES MIN. 10'-12" HT X 5' SPRD			=	7	TREES			13	TREES
75% TREES MIN. 16'-18" HT X 9' SPRD			=	20	TREES			36	TREES
25% PALMS MIN. 12'-14" HT			=	0	PALMS			3	PALMS
75% PALMS MIN. 22'-28" HT			=	0	PALMS			8	PALMS

### NOTES

Sod to be St. Augustine "Floritam", contractor to determine quantity.

All sod and landscape areas to receive 100% coverage with 50% overlap from an automatic irrigation system using an approved water source. A rain sensor must be installed.

Bubblers to be provided for large trees and palms.

Contractor is responsible for all conditions and landscape specification attached to this plan and plant list. Plan and specifications shall be considered Contract Documents.

A pre-planting meeting with the Department of Planning, Zoning, & Economic Development - Landscape is required before any plant material is installed on site.

All road rock, concrete, asphalt and other non-natural material be removed and be replaced with planting soil prior to landscape installation.

No trenching allowed within root zones of existing trees.

### PLANT LIST

SYMBOL	KEY	QTY	SPECIMEN TREES
	QV	1	Quercus virginiana (Live Oak) 25+ ht., 8" cal. collected specimens
SYMBOL	KEY	QTY	LARGE TREES
	BS	7	Bursera simaruba (Gumbo Limbo) 20+ ht., 10" spr., 6" cal. full canopy
	LL	13	Lysitoma latisiliqua (Wild Tamarind) 20+ ht., 10" spr., 6" cal. full canopy
	QV	34	Quercus virginiana (Live Oak) 20+ ht., 10" spr., 6" cal. full canopy
	SM	18	Swietenia mahagoni (West Indies Mahogany) 20+ ht., 10" spr., 6" cal. full canopy
SYMBOL	KEY	QTY	SMALL TREES
	CD	6	Coccoloba diversifolia (Pigeon Plum) 12+ ht., 6" spr., 3" cal., full canopy
	EF	11	Eugenia foetida (Spanish Stopper) 10+ ht., 5" spr., 2" cal., full canopy
	MF	12	Myrcianthes fragrans (Simpson Stopper) 10+ ht., 5" spr., 2" cal., full canopy
SYMBOL	KEY	QTY	FLOWERING TREES
	CF	7	Cassia fistula (Golden Shower Tree) 12+ ht., 6" spr., 3" cal., full canopy
	JM	6	Jacaranda mimosifolia (Jacaranda Tree) 12+ ht., 6" spr., 3" cal., full canopy
SYMBOL	KEY	QTY	WETLAND TREES
	AR	13	Acer rubrum (Red Maple) 16" ht., 8" spr., 4" cal., full canopy
	AG	7	Annona glabra (Pond Apple) 12+ ht., 6" spr., 3" cal., full canopy
	TD	27	Taxodium distichum (Bald Cypress) 16" ht., 8" spr., 4" cal., full canopy
	TD3	25	Taxodium distichum (Bald Cypress) 10" ht., 5" spr., 2" cal., full canopy
SYMBOL	KEY	QTY	PALM TREES
	BN	3	Bismarckia nobilis (Silver Bismarck Palm) 22-28' o.a. ht., heavy
	RR	9	Roystonea regia (Royal Palm) 22-28' o.a. ht., heavy
	SP	46	Sabal palmetto (Cabbage Palm) 16-22' o.a. staggered hts., heavy
	TR	18	Thrinax radiata (Florida Thatch Palm) 12-16' o.a. ht., heavy
	VM	26	Veitchia montgomeryana (Montgomery Palm) 16-22' o.a. staggered hts., heavy

NOTE:  
All trees shall be field grown/balled & burlapped (fg/bb)  
Utilize maleleuca mulch

SHRUBS & GROUNDCOVERS		
KEY	QUANTITY	PLANT NAME AND SPECIFICATION
* N ARA	3840	Arachis glabrata (Perennial Peanut) 10" ht., 18" spr., full, 18" o.c.
* N ACR	60	Acrostichum danaeifolium (Leather Fern) 36" ht., 36" spr., full, 3' o.c.
** N CHR	270	Chrysobalanus icaco (Cocoplum) 30" ht., 24" spr., full, 2' o.c.
** CLU	503	Clusia guttifera 36" ht., 24" spr., full, 3' o.c.
* N CRI	485	Cnrum americanum (Swamp Lily) 24" ht., 24" spr., full, 2' o.c.
** N ELE	520	Eleocharis interstincta (Jointed Spikerush) 18" ht., 18" spr., full, 2' o.c.
** FGI	269	Ficus 'Green Island' 12" ht., 14" spr., full, 16" o.c.
* N JUN	520	Juncus effusus (Soft Rush) 18" ht., 18" spr., full, 2' o.c.
* N MUH	65	Muhlenbergia capillaris (Muhly Grass) 30" ht., 24" spr., full, 3' o.c.
* N PON	1083	Pontederia cordata (Pickerel Weed) 18" ht., 18" spr., full, 2' o.c.
* N SAG	520	Sagittaria lanceolata (Arrowhead) 18" ht., 18" spr., full, 2' o.c.
* TAB	105	Tabernaemontana (Pinwheel Jasmine) 20" ht., 24" spr., 2' o.c., full
** N ZAM	197	Zamia floridanum (Coontie) 18" ht., 18" spr., full, 2' o.c.

SHRUB MIX	30" ht., 24" spr., full, 2' o.c.
Cordyline fruticosa (Red Hawaiian Ti)	
Galphimia gracilis (Thryallis)	
Hamelia patens (Firebush)	
Jasminum volubile (Wax Jasmine)	
Pennisetum setaceum (White Fountain Grass)	
Philodendron 'Burle Marx'	
Philodendron 'Rojo Congo'	
Psychotria nervosa (Wild Coffee)	

GROUNDCOVER MIX	12" ht., 14" spr., full, 18" o.c.
Aechmea spp. (Bromeliads)	
Begonia odorata 'alba' (White Tropical Begonia)	
Bromeliade spp. (Bedding Bromeliads)	
Erodia littoralis (Golden Creeper)	
Ilex v. 'Schillings Dwarf' (Dwarf Yaupon Holly)	
Lantana montivdensis (Trailing Lantana)	
Polypodium/Microsorium scolopendrium (Wart Fern)	
Trachelospermum asiaticum 'minima' (Asiatic Jasmine)	

### CITY OF PLANTATION PLANTING CRITERIA

All plant material shall be Florida No. 1 or better according to Grades and Standards for Nursery Plants. All trees that are designated as single-trunk trees shall have a single, dominant leader, proper structural branching and even distribution of their branches and a relatively straight trunk. Trees with bark inclusion, trees that have been tipped, and co-dominant trunks at any heights will not be accepted. Trees with girdling, circling and/or plunging roots will be considered culis and therefore rejected.

A pre-planting meeting is required with the Department of Planning, Zoning & Economic Development, Landscape at 954-797-2248 prior to any work being done on the property.

All trees and palms shall be field grown balled and burlapped.

All trees and palms must be planted so the top of the root ball, root flair, and first order roots are at the same level or slightly above the final grade. (Adventitious roots are not considered first order roots.)

All synthetic burlap, synthetic string or cords shall be removed from the rootballs before any trees are planted. The top portion of burlap must be removed from the top of the rootballs. The top 1/3rd of wire baskets shall be removed, the bottom 2/3rds shall be cut before the trees are installed.

All synthetic tape (i.e., tagging tape, nursery tape) shall be removed from trunks, branched, etc. before inspection. Remove all bamboo and metal stakes from the trees.

Trees shall have a mulch ring of a minimum of 4' diameter. Mulch should have a minimum depth of 2" and a maximum depth of 3". All planting beds must be mulched. Mulch should be kept 3" from the base of all plant material. Cypress mulch, red, gold and green mulch is prohibited. Other clean hardwood species or clean recycled mulch may be used. Establish clean planting bed lines, leave > 1 1/2' on either side of the plant material for maintenance.

All trees and palms shall be guyed with proper horticultural and arboricultural techniques. Do not use wire, black strapping, or other synthetic material for the staking of trees. Please use biodegradable material for staking. Nailing into trees and palms for any reason is prohibited. All staking material shall be removed once trees are established.

Shrubs at the time of installation shall not be less than 2 1/2' in height with a minimum height of 30" for perimeter hedge material.

Ground cover areas at the time of installation shall be planted with a minimum coverage of 75% coverage. All landscape areas shall be provided with an automatically-operating underground irrigation system; with a minimum of 100% coverage, with 50% minimum overlap in groundcover and shrub areas. The rain sensor must be installed and operational as well as the rust inhibitor if applicable.

In compliance with Section 13-34(6) of the City's landscape code of ordinances all planting bed areas must have a minimum of 6" of planting soil, and all sodded areas shall have 2" of planting soil. This soil shall be filled into existing soil on site. All soil shall be free of weeds and other noxious materials. Recycled compost is encouraged as a soil amendment. Please contact the City prior to planting for an inspection of the planting beds/islands.

All utility equipment, such as FPL boxes, cable TV boxes, back flow preventers, irrigation equipment, and air conditioner units shall be screened with appropriate plant material.

Please use City approved planting details.

Where applicable, appropriate tree protection barriers must be in place prior to the commencement of ANY work on the property.

Where applicable, tree removal and/or tree relocation permits must be obtained through the Department of Planning, Zoning & Economic Development prior to any work being done on the property.

Please follow approved landscape plans for species, sizes, locations, quantities, quality, etc. If you are unable to locate plant material at required specifications please contact our department prior to any changes being made at 954-797-2248.



301 East Atlantic Boulevard  
Pompano Beach, Florida 33060-6643

2160 NW 82<sup>nd</sup> Avenue  
Doral, Florida 33122

PH: (954) 788-3400

Florida Certificate of  
Authorization # - 7928

BID / CONTRACT NO. :

#### REVISIONS

NO.	DESCRIPTION	DATE
1	PER DRC COMMENTS	07/18/2018

#### PRELIMINARY PLAN NOT FOR CONSTRUCTION

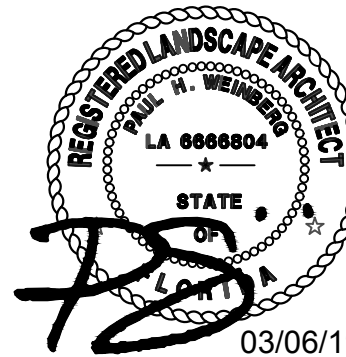
RESPONSIBILITY FOR THE USE OF THESE  
PLANS PRIOR TO OBTAINING PERMITS  
FROM ALL AGENCIES HAVING JURISDICTION  
OVER THE PROJECT WILL FALL SOLELY  
UPON THE USER.

INVESCA



4400 NW 8th CT  
PLANTATION, FL 33317

SCALE: AS NOTED  
DATE ISSUED: NOVEMBER, 2017  
DRAWN BY: SR  
DESIGNED BY: PW  
CHECKED BY: PW



PAUL WEINBERG, PLA  
FLORIDA REG. NO. LA666804  
(FOR THE FIRM)

SHEET TITLE

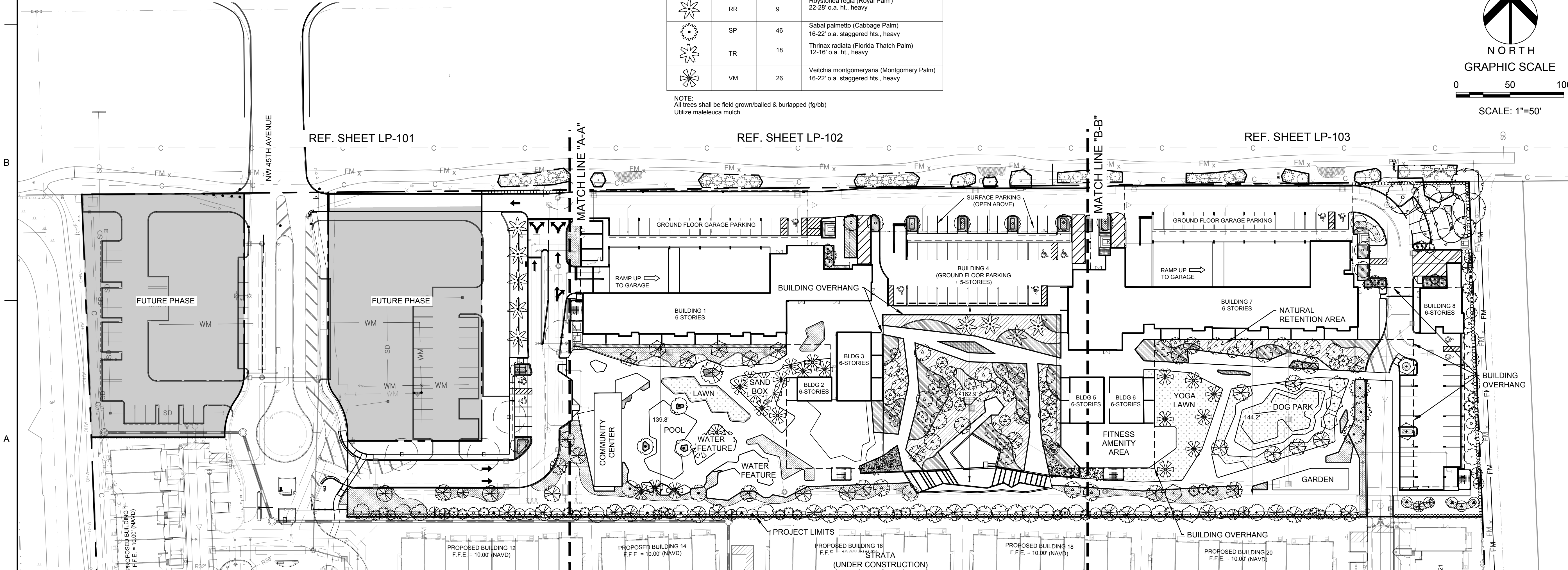
OVERALL  
LANDSCAPE PLAN

SHEET NUMBER

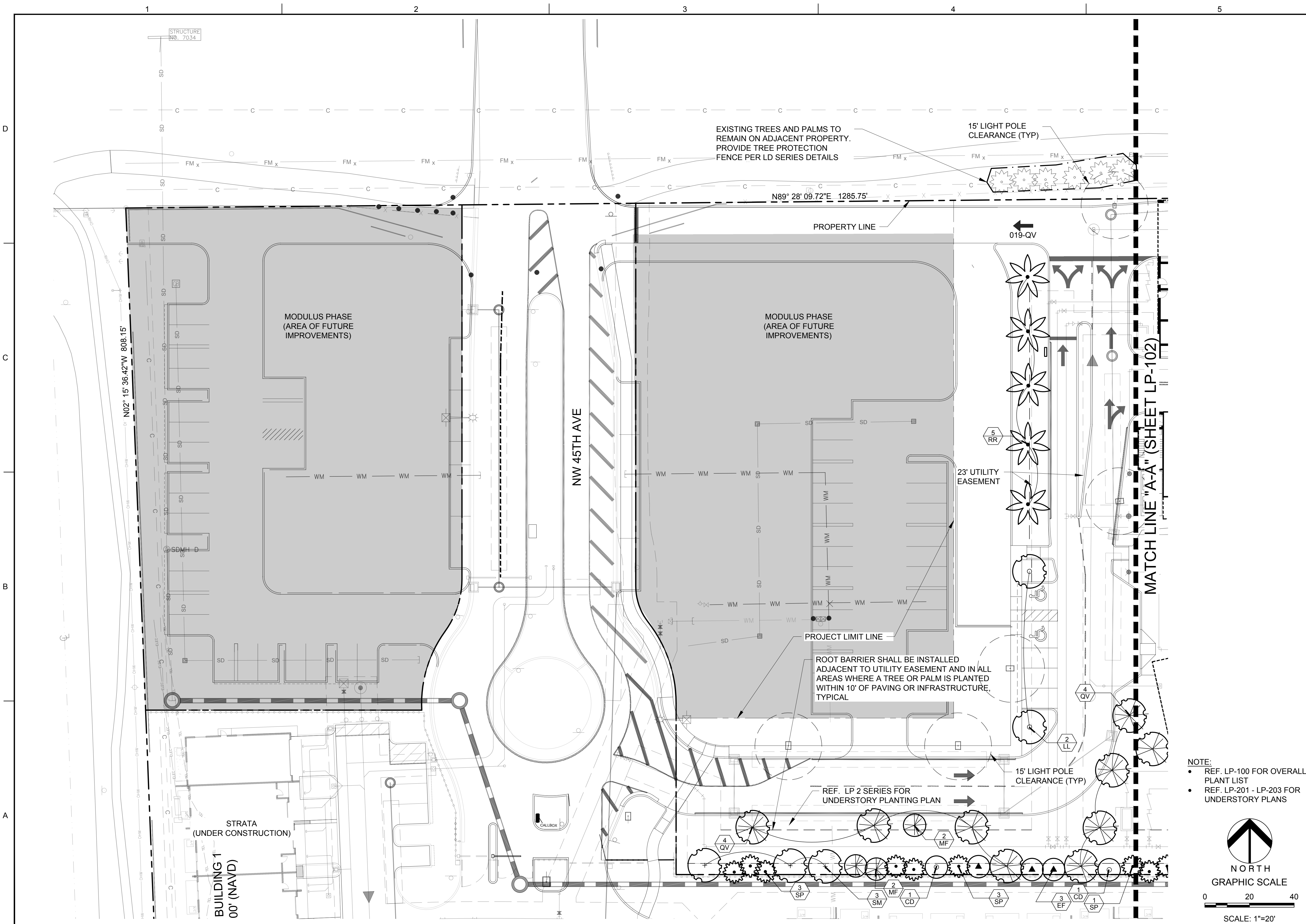
LP-100

CITY COMMISSION SUBMITTAL

PROJECT NO. 08808.01







301 East Atlantic Boulevard  
Pompano Beach, Florida 33060-6643

2160 NW 82<sup>nd</sup> Avenue  
Doral, Florida 33122

PH: (954) 788-3400

Florida Certificate of  
Authorization # - 7928

BID / CONTRACT NO. :

REVISIONS

NO.	DESCRIPTION	DATE
Δ	PER DRC COMMENTS	03/06/2019

**PRELIMINARY PLAN  
NOT FOR CONSTRUCTION**

RESPONSIBILITY FOR THE USE OF THESE  
PLANS PRIOR TO OBTAINING PERMITS  
FROM ALL AGENCIES HAVING JURISDICTION  
OVER THE PROJECT WILL FALL SOLELY  
UPON THE USER.

4400 NW 8th CT  
PLANTATION, FL 33317

SCALE: AS NOTED

DATE ISSUED: NOVEMBER, 2017

DRAWN BY: SR

DESIGNED BY: PW

CHECKED BY: PW

03/06/19

PAUL WEINBERG, PLA  
FLORIDA REG. NO. LA666804  
(FOR THE FIRM)

SHEET TITLE

**LANDSCAPE PLAN  
(TREE CANOPY)**

SHEET NUMBER

**LP-101**

CITY COMMISSION SUBMITTAL

PROJECT NO. **08808.01**

NOTE:

- REF. LP-100 FOR OVERALL PLANT LIST
- REF. LP-201 - LP-203 FOR UNDERSTORY PLANS

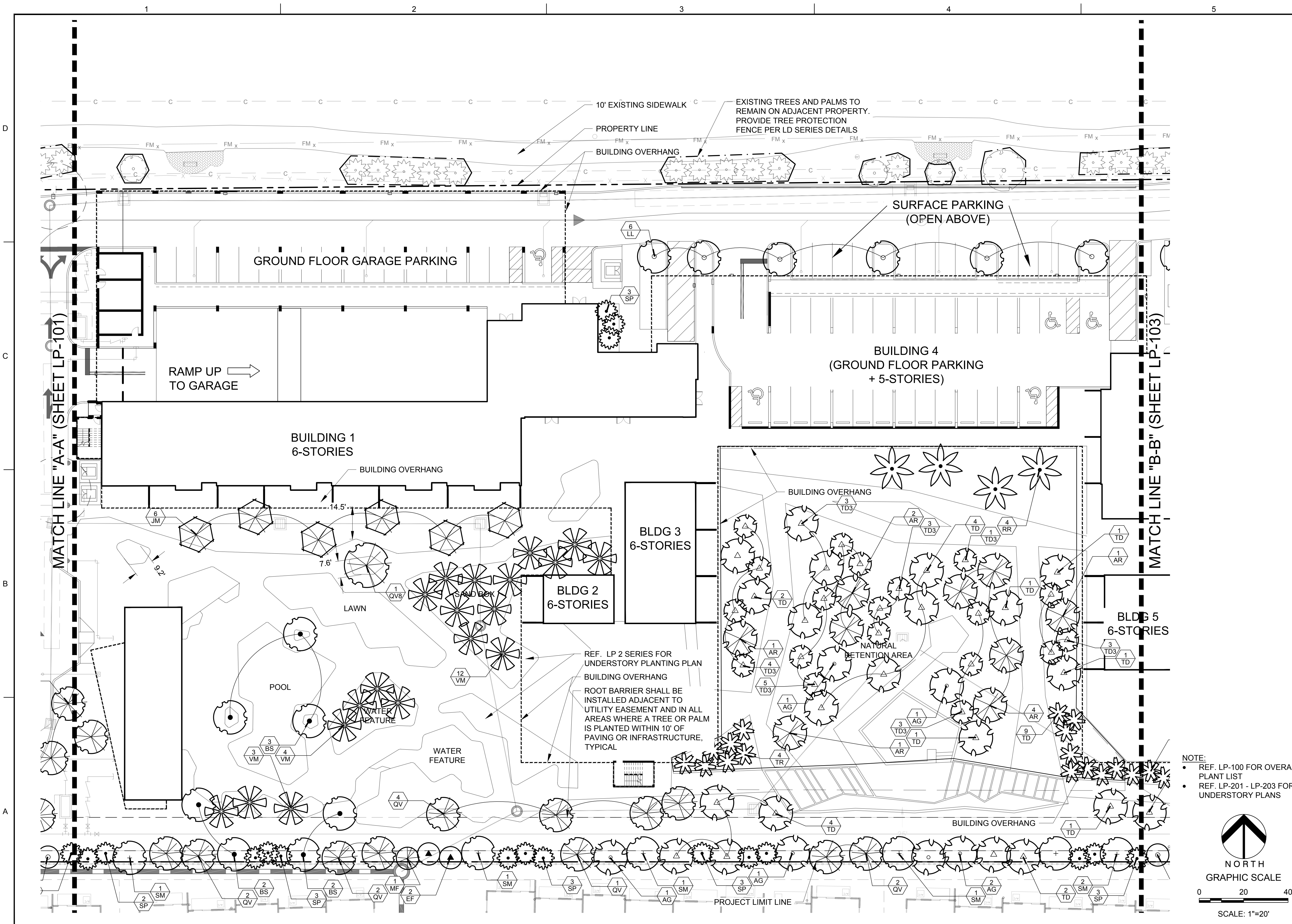
NORTH

0 20 40

SCALE: 1"=20'

Drawing name: A:\08808.01 - PIXL (Strata Phase 2) - Invesca Landscape Architecture\08808.01 - LP-101.dwg Layout Name: LP-101 Plotted on: Mar 05, 2019 - 6:53am Plotted by: Soeren





301 East Atlantic Boulevard  
Pompano Beach, Florida 33060-6643

2160 NW 82<sup>nd</sup> Avenue  
Doral, Florida 33122

PH: (954) 788-3400

Florida Certificate of  
Authorization # - 7928

BID / CONTRACT NO. :  
  
REVISIONS  

NO.	DESCRIPTION	DATE
Δ	PER DRC COMMENTS	03/06/2019

PRELIMINARY PLAN  
NOT FOR CONSTRUCTION

RESPONSIBILITY FOR THE USE OF THESE  
PLANS PRIOR TO OBTAINING PERMITS  
FROM ALL AGENCIES HAVING JURISDICTION  
OVER THE PROJECT WILL FALL SOLELY  
UPON THE USER.

4400 NW 8th CT  
PLANTATION, FL 33317

SCALE: AS NOTED  
DATE ISSUED: NOVEMBER, 2017  
DRAWN BY: SR  
DESIGNED BY: PW  
CHECKED BY: PW

SHEET TITLE  
**LANDSCAPE PLAN  
(TREE CANOPY)**

SHEET NUMBER  
**LP-102**

CITY COMMISSION SUBMITTAL

PROJECT NO. **08808.01**

NOTE:  
• REF. LP-100 FOR OVERALL  
PLANT LIST  
• REF. LP-201 - LP-203 FOR  
UNDERSTORY PLANS

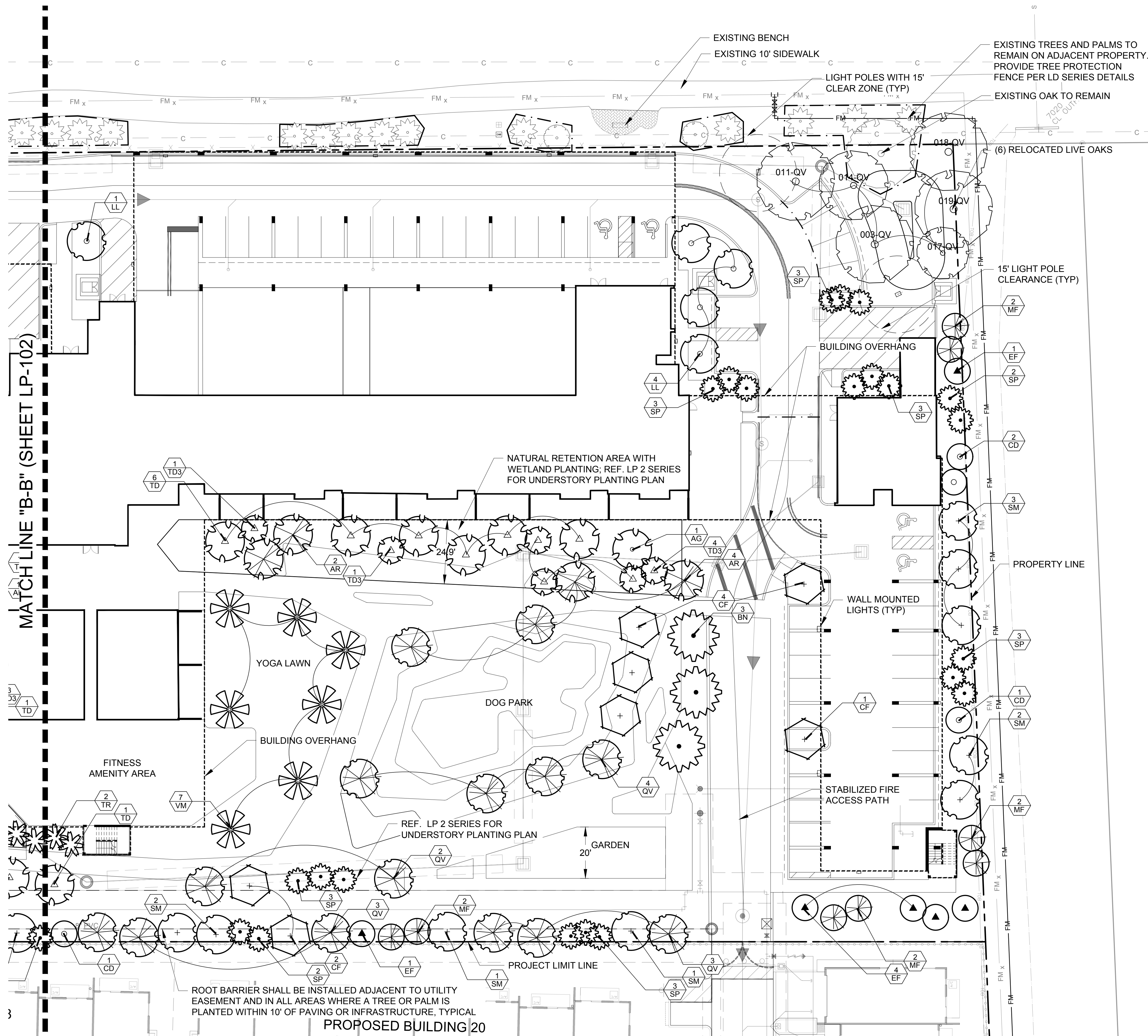
NORTH

GRAPHIC SCALE  
0 20 40

SCALE: 1"=20'

Drawing name: A:\08808.01 - PIXL (State Phase 2) - Invesca Landscape Architecture\08808.01 - LP-101.dwg    Layout Name: LP-102    Plotted on: Mar 04, 2019 - 4:55pm    Plotted by: Soeren

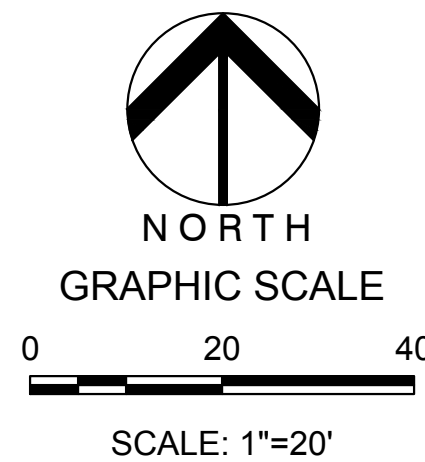




ROOT BARRIER SHALL BE INSTALLED ADJACENT TO UTILITY EASEMENT AND IN ALL AREAS WHERE A TREE OR PALM IS PLANTED WITHIN 10' OF PAVING OR INFRASTRUCTURE, TYPICAL

**PROPOSED BUILDING 20**

- NOTE:**
- REF. LP-100 FOR OVERALL PLANT LIST
  - REF. LP-201 - LP-203 FOR UNDERSTORY PLANS



301 East Atlantic Boulevard  
Pompano Beach, Florida 33060-6643

2160 NW 82<sup>nd</sup> Avenue  
Doral, Florida 33122

PH: (954) 788-3400

Florida Certificate of Authorization # - 7928

BID / CONTRACT NO. :

REVISIONS		
NO.	DESCRIPTION	DATE
1	PER DRC COMMENTS	03/06/2019

**PRELIMINARY PLAN  
NOT FOR CONSTRUCTION**

RESPONSIBILITY FOR THE USE OF THESE PLANS PRIOR TO OBTAINING PERMITS FROM ALL AGENCIES HAVING JURISDICTION OVER THE PROJECT WILL FALL SOLELY UPON THE USER.

4400 NW 8th CT  
PLANTATION, FL 33317

SCALE:	AS NOTED
DATE ISSUED:	NOVEMBER, 2017
DRAWN BY:	SR
DESIGNED BY:	PW
CHECKED BY:	PW

**SHEET TITLE**

**LANDSCAPE PLAN  
(TREE CANOPY)**

**SHEET NUMBER**

**LP-103**

**CITY COMMISSION SUBMITTAL**

**PROJECT NO. 08808.01**

Drawing name: K:\08808.01 - PIXL (State Phase 2) - Invetral Landscape Architecture\08808.01 - LP-103.dwg Layout Name: LP-103 Plotted on: Mar 05, 2019 - 6:55am Plotted by: Susan

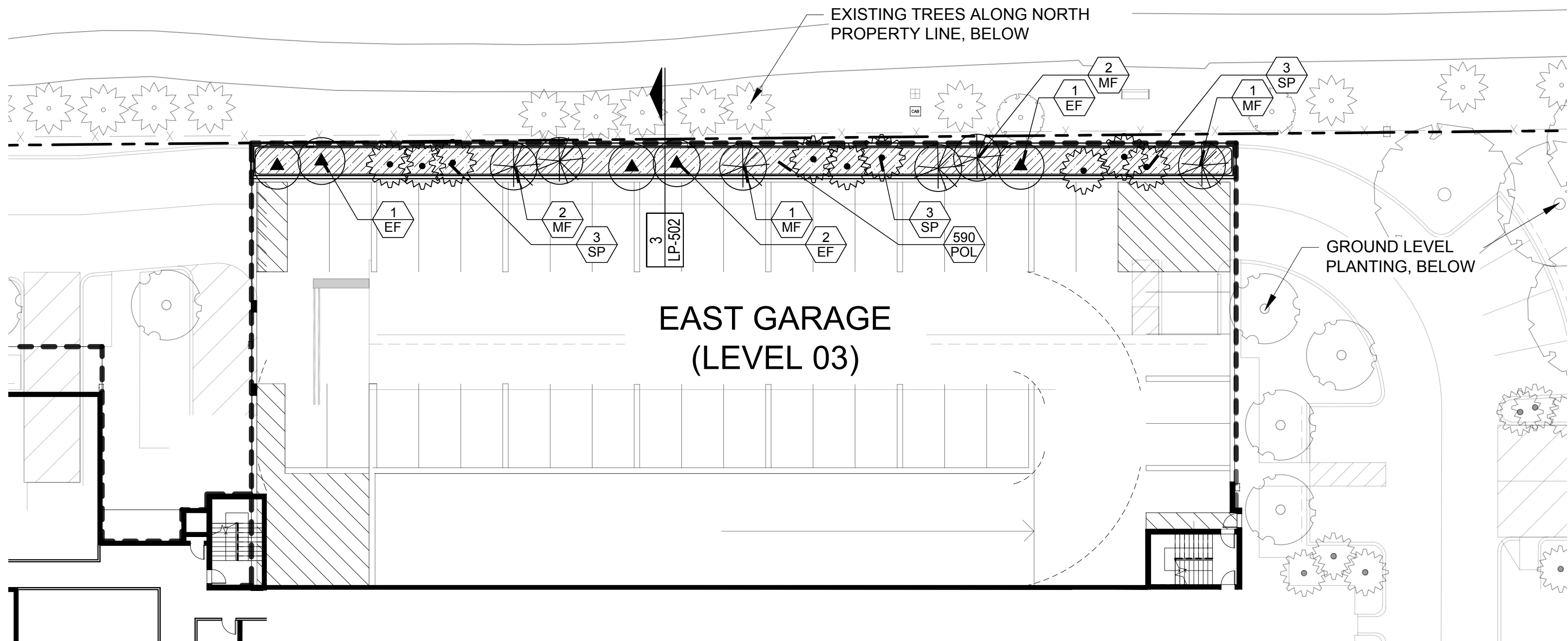


D

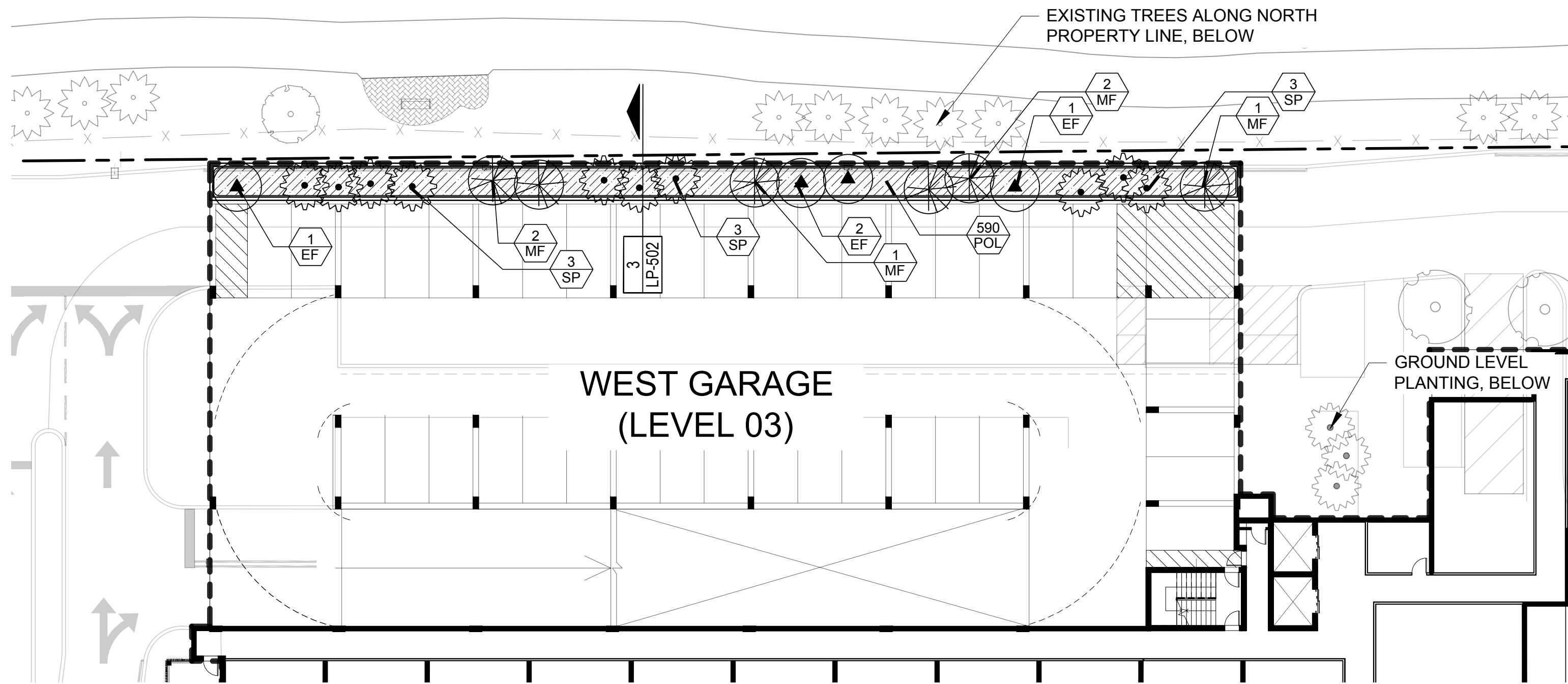
C

B

A



1 EAST GARAGE - LEVEL 03 PLANTING SCHEME  
SECTION SCALE = 1:20



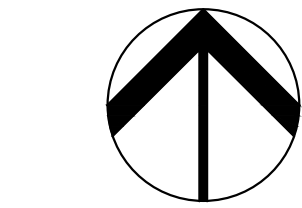
2 WEST GARAGE - LEVEL 03 PLANTING SCHEME  
SECTION SCALE = 1:20

PLANT LIST - LEVEL 03

SYMBOL	KEY	QTY	SMALL TREES
	EF	11	Eugenia foetida (Spanish Stopper) 10'+ ht., 5' spr., 2" cal., full canopy
	MF	12	Myrcianthes fragrans (Simpson Stopper) 10'+ ht., 5' spr., 2" cal., full canopy
SYMBOL	KEY	QTY	PALM TREES
	SP	46	Sabal palmetto (Cabbage Palm) 16-22' o.a. staggered hts., heavy
SYMBOL	KEY	QTY	GROUND COVER
	POL	XX	Polypodium scolopendrium (Wart Fern) 12' ht., 14" spr., full, 18" o.c.

NOTE:  
All trees shall be field grown/balled & burlapped (fg/bb)  
Utilize maleleuca mulch

- NOTE:
- REF. LP-100 FOR OVERALL PLANT LIST
  - REF. LP-101 FOR GROUND LEVEL PLANTING PLAN
  - REF. LP-201 - LP-203 FOR UNDERSTORY PLANS



NORTH  
GRAPHIC SCALE

0 20 40

SCALE: 1"=20'



301 East Atlantic Boulevard  
Pompano Beach, Florida 33060-6643

2160 NW 82<sup>nd</sup> Avenue  
Doral, Florida 33122

PH: (954) 788-3400

Florida Certificate of  
Authorization # - 7928

BID / CONTRACT NO. :

REVISIONS

NO.	DESCRIPTION	DATE
1	PER DRC COMMENTS	03/06/2019

PRELIMINARY PLAN  
NOT FOR CONSTRUCTION

RESPONSIBILITY FOR THE USE OF THESE  
PLANS PRIOR TO OBTAINING PERMITS  
FROM ALL AGENCIES HAVING JURISDICTION  
OVER THE PROJECT WILL FALL SOLELY  
UPON THE USER.



P I X L

4400 NW 8th CT  
PLANTATION, FL 33317

SCALE: AS NOTED

DATE ISSUED: NOVEMBER, 2017

DRAWN BY: SR

DESIGNED BY: PW

CHECKED BY: PW



PAUL WEINBERG, PLA  
FLORIDA REG. NO. LA6666804  
(FOR THE FIRM)

SHEET TITLE

LANDSCAPE PLAN  
(LEVEL 03)

SHEET NUMBER

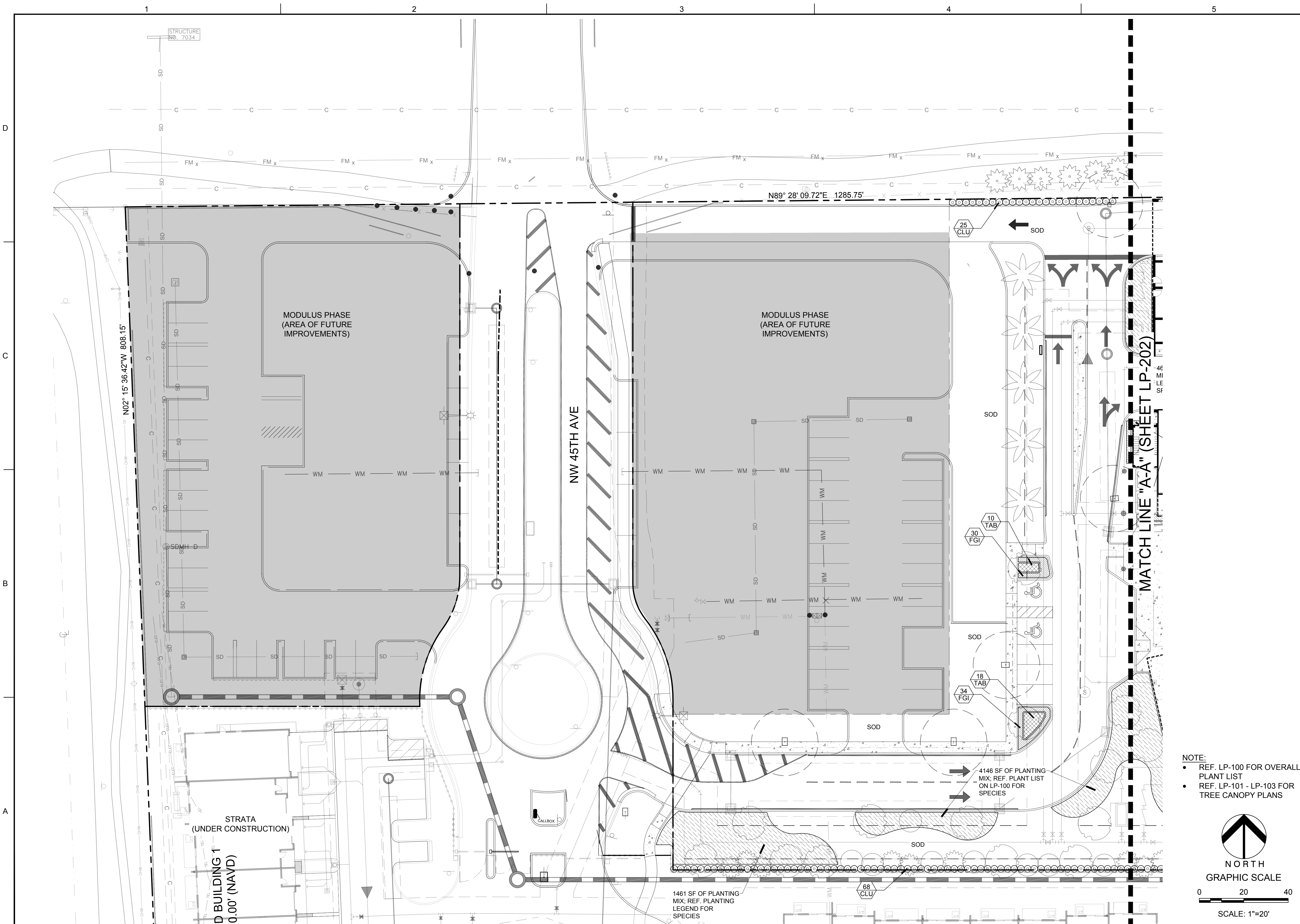
LP-104

CITY COMMISSION SUBMITTAL

PROJECT NO. 08808.01

Drawing name: N:\080808.01 - PIXL (Sheet Phase 2) - Invesca Landscape Architecture\080808.01 - LP-104.dwg Layout Name: LP-104 Printed on: Mar 04, 2019 9:32am Plotted by: Susan





301 East Atlantic Boulevard  
Pompano Beach, Florida 33060-6643

2160 NW 82<sup>nd</sup> Avenue  
Doral, Florida 33122

PH: (954) 788-3400

Florida Certificate of  
Authorization # - 7928

BID / CONTRACT NO. :

NO.	DESCRIPTION	DATE
Δ	PER DRC COMMENTS	03/06/2019

**PRELIMINARY PLAN  
NOT FOR CONSTRUCTION**

RESPONSIBILITY FOR THE USE OF THESE  
PLANS PRIOR TO OBTAINING PERMITS  
FROM ALL AGENCIES HAVING JURISDICTION  
OVER THE PROJECT WILL FALL SOLELY  
UPON THE USER.

4400 NW 8th CT  
PLANTATION, FL 33317

SCALE:	AS NOTED
DATE ISSUED:	NOVEMBER, 2017
DRAWN BY:	SR
DESIGNED BY:	PW
CHECKED BY:	PW

SHEET TITLE

**LANDSCAPE PLAN  
(UNDERSTORY)**

SHEET NUMBER

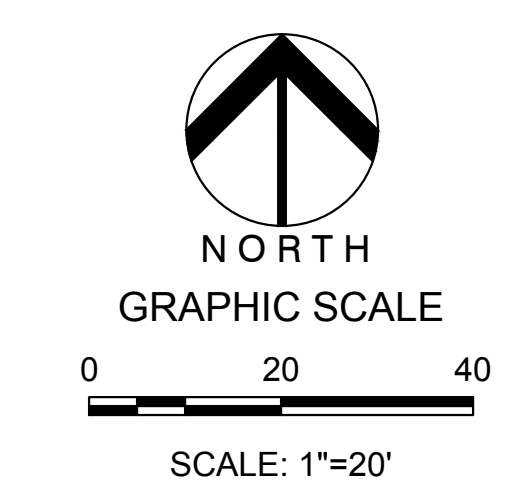
**LP-201**

CITY COMMISSION SUBMITTAL

PROJECT NO. **08808.01**

NOTE:

- REF. LP-100 FOR OVERALL PLANT LIST
- REF. LP-101 - LP-103 FOR TREE CANOPY PLANS



Drawing name: A:\08808.01 - PIXL (Strata Phase 2) - Invesca Landscape Architecture\08808.01 - LP-201.dwg    Layout Name: LP-201    Plotted on: Mar 04, 2019 - 4:25pm    Plotted by: Susan











A.

SCOPE

1.

The location of plants, as shown on the plans, is approximate. The final locations may be adjusted slightly to accommodate unforeseen field conditions, to comply with safety setback criteria, to avoid creating unsafe sight conditions, or as otherwise directed or approved by the Landscape Architect / owner in writing. All other location adjustments to the layout are to be approved in advance in writing by the Landscape Architect and owner.

2.

Contractor understands that an important element of the design of this project is meeting landscape ordinances with a design flare that includes symmetry, alignment, focal points and / or smooth curvilinear forms where applied and contractor shall follow and install the working crews accordingly. In the event of any doubt as to how to execute the plans, Contractor shall immediately consult with Architect and/or Owner.

3.

Landscape Contractor shall fine grade, prepare site as outlined in the following notes and per plans; furnish and install all plants, shrubs, trees and / or palms meeting minimum requirements and brace them per details provided. Furnish and install soil, gravel, boulders, sod and mulch as specified in plans and notes below.

4.

Landscape contractor shall furnish and install all trees, palms, shrubs, groundcover, sod, planting soil, fertilizer, herbicide, pre-emergence herbicide, seed, and mulch.

B.

BIDDING

1.

Contractor to have liability insurance including Owner and Landscaper as insured's in excess of \$10,000 as well as Worker's Compensation.

2.

Contractors and Subs must ensure they are doing take offs from Bldg Dep. Revised sets and / or Bid Set documents. Verify with this Office that you are bidding from latest available plans.

3.

Submit Landscape / Hardscape RFI directly to Keith & Associates Landscape Architect/Project Manager in writing. T. 954.788.3400

4.

Read ALL notes and typical planting details sheets prior to submitting RFIs and prior to bidding.

5.

When submitting an RFI reference sheet number, detail number and/or note category and number.

6.

Landscape contractor shall verify all estimated quantities of material shown on the drawings prior to submitting their bid. Plant list pricing if shown is for permitting / mitigation comparison purposes only, any prices shown are to be disregarded by Landscape Contractor.

7.

All Plant Material shall meet or exceed height and spread requirement. Heights are City code requirement and / or design intent related and always governs over container size. Container size given for reference only and must be sized-up to meet height requirements of plant list. Plant material available with excessive height beyond specifications must be consulted with Landscape Architect for design intent.

8.

All landscape material was confirmed to be available at time of design landscape contractor understands that some material may not be available in the same City, however available in Tri-County Region. Plant material supply is the responsibility of the Landscape Contractor that is awarded the contract and he/she shall take steps to ensure availability at the time of installation. Bring to the attention of Landscape Architect if specific material availability is no longer the case at the time of bidding and / or prior to actual construction for approval of substitutions that meet City ordinances and / or owner requirements and design intent.

9.

Pre-inspections of site required prior to bidding.

10.

The plant list is intended only as an aid to bidding. Any discrepancies found between the quantities on the plan and the quantities on the plant list shall be held valid, but in any event, Landscape Architect shall be contacted for clarification.

11.

All labor and material for soil amendments and fertilizer that is required to ensure the successful establishment and survival of the proposed vegetation, as well as all the cost for the removal of unsuitable or excess backfill material from plantbeds, in addition to fine grading and mulching all plantbeds and individual trees shall be included in the contractor's bid to perform the work represented in this plan set.

12.

Bid shall be itemized for possible value engineering.

13.

Sod and Rocks (if specified) shall be estimated by scaling plans. Include price per square foot for sod. Rocks (include price per ton). Small rocks and gravel beds shall have landscape fabric material and minimum 2" depth. Boulders to be bid by unit.

14.

All S.F. if noted is approximate and shall not be considered all inclusive; it is the contractor's responsibility to do his or her take off, submit price per S.F. and in the end end soil and sod all areas that are not covered either by plants, mulch and/or rocks. It shall be the responsibility of the contractor to include in the bid, the repair of any existing sod which may be damaged during construction.

15.

Final payment to the Contractor shall be for actual plants installed on the project.

16.

Contractor shall be responsible for obtaining and paying for costs of all permits described in bid whether permit costs are reimbursable by owner or included in bid. Research permit status and research all permits and additional documentation and certifications required such as separate tree removal permit for example, and consider prior to bidding.

17.

General Landscape Contractor shall leave a 5% unforeseen conditions allowance such as for additional root barriers determined to be needed on site and as job progresses.

18.

Refer to T. Watering for supplemental watering requirement.

19.

Landscape Contractor is responsible for verifying all plant quantities prior to bidding and within 7 calendar days of receipt of these plans shall notify the landscape architect in writing of any and all discrepancies. In case of discrepancies planting plans shall take precedence over plant list. No substitutions are to be made without prior consent of the Landscape Architect.

C.

GENERAL LANDSCAPE NOTES

1.

Plants grown in containers prior to installation shall be removed from their containers before they are planted in the ground and have circling roots removed. All screening shrubs shall be planted for proper operation of equipment being screened and/or per the requirements of the utility as necessary. All hedge material required for screening purposes shall be planted with branches touching. Adjust spacing as necessary and/or provide additional plants to provide an adequate screen as required by code. Leave access to utility or clearance as required.

2.

All landscaping shall be installed according to sound nursery practices. Contractor shall comply with federal, state and local laws and regulations pertaining to the inspection for plant disease and insect infestation.

3.

All ideas, designs and plans indicated or represented by this drawing are owned by and are the exclusive property of Keith and Associates and may not be duplicated without authorization or used for other projects than the intended.

4.

The Landscape Contractor shall exercise caution to protect any existing sod, electrical and irrigation. Any damage to the sod, electrical or irrigation shall be replaced or repaired to the original state by the Landscape Contractor at no additional cost to the owner.

5.

Trees, palms, accent shrubs and bed lines are to be located in the field and approved by the Landscape Architect / owner prior to planting. Landscape Contractor acknowledges that material planted without approval of location may be subject to relocation by Landscape Architect to maintain design intent if not followed properly.

6.

All trees must be pruned as per Landscape Architect's direction.

7.

In areas where asphalt is removed in order to receive landscape material, the lime rock sub-base material must also be removed and replaced with approved planting soil mix.

8.

Landscape contractor is responsible for sending photographs to the landscape architect to pre-approve all trees, palms, and shrubs prior to delivery to project site.

9.

Landscape contractor shall coordinate his or her work with that of the irrigation, landscape lighting, and hardscape contractor if different.

10.

The landscape contractor shall treat plant areas with pre-emergence herbicide after weeds and grass has been removed. Landscape contractor shall wait 7 days after pre-emergence treatment prior to planting.

D.

PERMITS & REGULATIONS

1.

Contractor(s) must obtain separate landscape, irrigation and tree relocation/removal permits from the city prior to the issuance of the first building permit for the project.

2.

Landscape contractor to call the city Landscape Inspector to schedule a pre-construction meeting prior to installation if required.

3.

All mandatory requirements by City Landscape Departments and their inspectors shall govern and landscape contractor commits by accepting contract to comply promptly for builder/owner to obtain C.O.

E.

TREE REMOVAL

1.

Removal of any trees or palms will require a written "tree removal permit" from the local governing agency prior to removal. The only tree species not requiring tree removal permits are melaleuca, brazilian pepper, australian pine and lead tree.

2.

The Landscape Contractor is responsible for coordinating tree and palm removals and transplants shown on the tree/palm Disposition Plan. The Landscape Contractor is to remove and discard from site existing unwanted trees, palms, shrubs, ground covers, sod and weeds within landscape areas.

F.

EXISTING TREES

1.

Existing trees designated to remain shall be protected during all construction phases. Any trees or shrubs scarred or destroyed designated to remain will be replaced at the contractor's expense, with same species, size and quality.

2.

Existing plant material not shown on the plan and in conflict with new planting shall be evaluated at the time of new planting installation by the Landscape Architect. Trees and plant material indicated to be relocated with no new location provided in plans shall be moved to a location on site designated as a nursery holding area with the root ball protected from direct sunlight, maintained and irrigated until new location is determined.

3.

Prune trees to remove damaged branches and improve natural shape and thin out structure. Do not remove more than 15% of branches. Do not prune back terminal leader.

4.

Prune existing shrubs to remove damaged branches and improve natural shape.

5.

Existing trees to remain shall be trimmed per ANSI-A300 standards. Supervision of the trimming shall be performed by an ISA Certified Arborist to ensure quality work.

6.

All existing trees shall be "lifted and thinned" to provide an 8' minimum clearance for sidewalks and pedestrian walkways and a 14' minimum clearance for roadways, driveways and all vehicular use areas.

7.

Selective canopy and root pruning of existing trees can be conducted (only as necessary and in no event more than 35%) to accommodate for new approved construction. Pruning shall be conducted / supervised by an ISA Arborist.

8.

If plans call for relocation of trees, palms or plants. High level of care should be exercised to assure that they are not damaged in the process and that they are promptly replanted upon being dug up.

9.

All underground utilities and drain or irrigation lines shall be routed outside the tree protection zone. If lines must traverse the protection area, they shall be tunneled or bored under the tree.

10.

Erosion control devices such as silt fencing, debris basins, and water diversion structures shall be installed to prevent siltation and/or erosion within the tree protection zone.

11.

Roots shall be cut manually by digging a trench and cutting exposed roots with a saw, vibrating knife, rock saw, narrow trencher with sharp blades, or other approved root pruning equipment.

G.

TREE RELOCATION (These notes for relocation trees only and if applicable)

1.

FLAG all trees and palms to be transplanted with differentiating color than those to be saved or removed.

2.

Tree Relocation process must be performed or supervised by ISA Certified Arborist.

3.

Water the root zones to field capacity for 5 continuous days before root pruning. At a minimum soak the soil to a 4'-0" depth within a 6' radius.  
Root prune a minimum of six weeks before relocation. Prune away all dead or damaged limbs or fronds. For trees, prune out 1/3 of the existing canopy by selectively trimming small internal branches. For palms, gather fronds above the head and remove loosely with jute twine to avoid damage.

4.

Brace root pruned trees awaiting relocation.

5.

Root prune 1/3rd of the root system, irrigate daily for 2 weeks then root prune another 1/3 rd, irrigate daily and prune last 1/3 rd on actual relocation date, no less than two weeks (six weeks total minimum root pruning by stages). ISA Arborist on staff shall observe for intense shock. Canopy pruning may be deemed necessary by Arborist on staff to balance for intense root ball loss, canopy shall be trimmed only as necessary to increase survival.

6.

Root prune with proper clean equipment to sever roots. Ensure roots are not torn or pulled apart.

7.

With hand tools, dig a 2'-0" wide by 3'-0" deep trench at a minimum distance as determined by the consulting arborist to expose roots. Cut all roots 1.5" and larger in diameter with a clean, sharp pruning saw. Treat all cuts with a fungicidal barrier. Backfill the trench, within 4 hours of digging, with a 1:1 mixture of site soil and sandwust or other fine organic material. Do not compact.

8.

From a rootball size in compliance with Florida grades and Florida standards number 1 or better.

9.

Maintain the soil moisture at field capacity throughout the six weeks.

10.

Allow the plant to regenerate roots over a period of six weeks.

11.

At the end of six weeks, prepare the planting pit at the new location. Overdig the hole diameter by 2" beyond the root ball at a minimum, but it is recommended that transplanting hole to be at least 1/3 larger than the area that was trenced for transplanting.

12.

With the consulting arborist present, undercut the entire root ball of the plants to be transplanted at a depth specified by the arborist. The undercutting method may be a choker cable drawn through the root ball with heavy equipment.

13.

At the direction of a professional rigger, assemble slings, padding, guiding ropes and cables for attachment to the crane or backhoe. The professional rigger shall determine the size of machinery necessary to execute the lifting and moving operation.

14.

Install trees within 24 hours of removal from their original location to locations provided by Landscape Architect or Developer with approval of City / Landscape Inspector.

15.

Experimented Tree Spade operator shall move tree or experienced tree mover shall choose best means and methods to strap and rig tree for transporting safely without damage to new location.

16.

Maintain trees in a healthy and vigorous condition during installation and throughout the plant establishment period. Replace trees that do not meet this requirement with the same species, size, and quality or per mitigation requirements specific to the city with jurisdiction.

17.

Fertilize the plant as directed by the consulting arborist.

18.

When the plant is placed in the new location, backfill the planting pit with topsoil and water thoroughly to eliminate air pockets and compact the soil. Set the tree no deeper than its original condition.

19.

Cover the root ball area with 3" depth of organic mulch.

20.

Provide fungicide and fertility applications at the direction of the consulting arborist.

21.

Post transplant watering to provide moisture and reduce any excessive stress due to root desiccation. Watering to be adjusted according to conditions and at the supervision and direction of the ISA certified arborist.

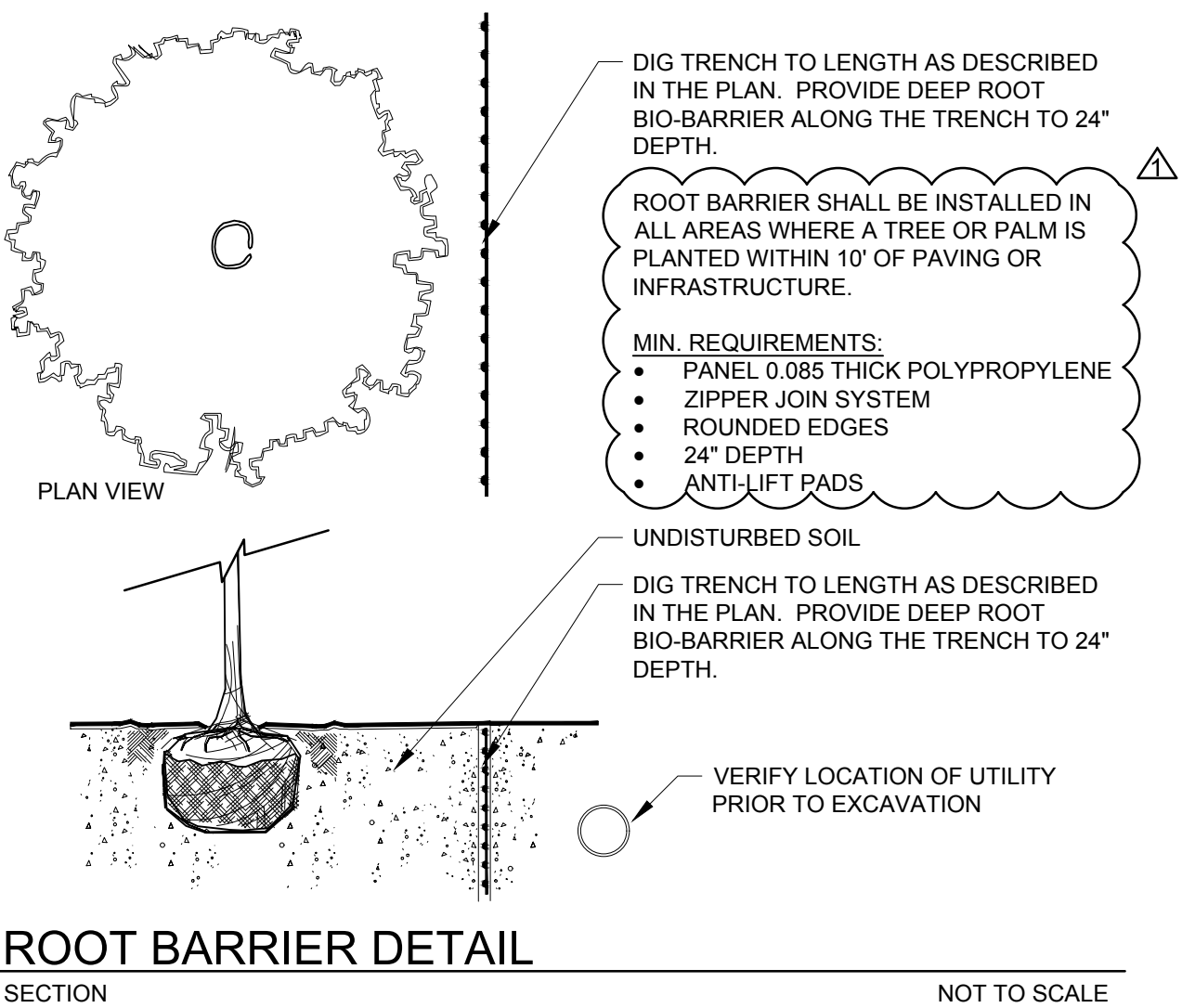


D

C

B

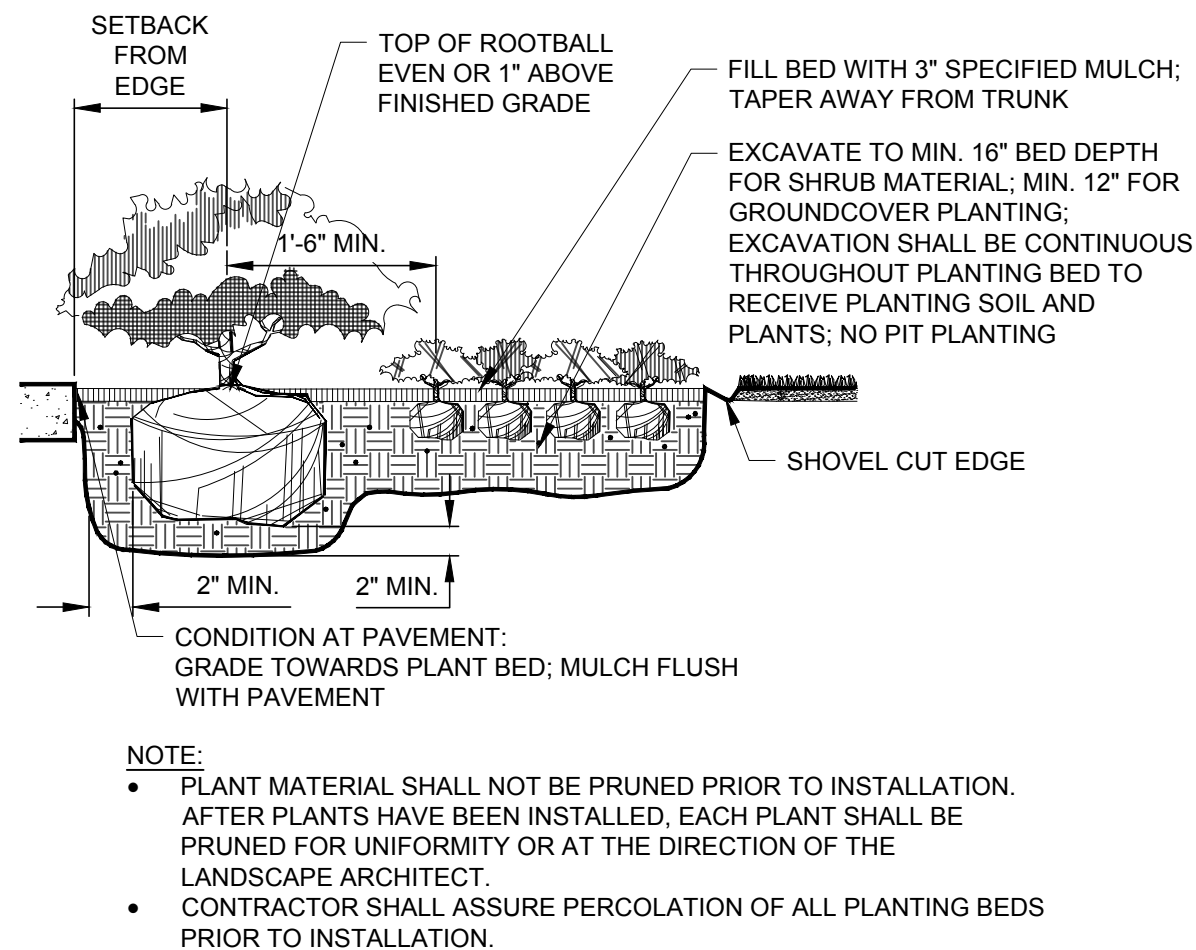
A



ROOT BARRIER DETAIL

SECTION

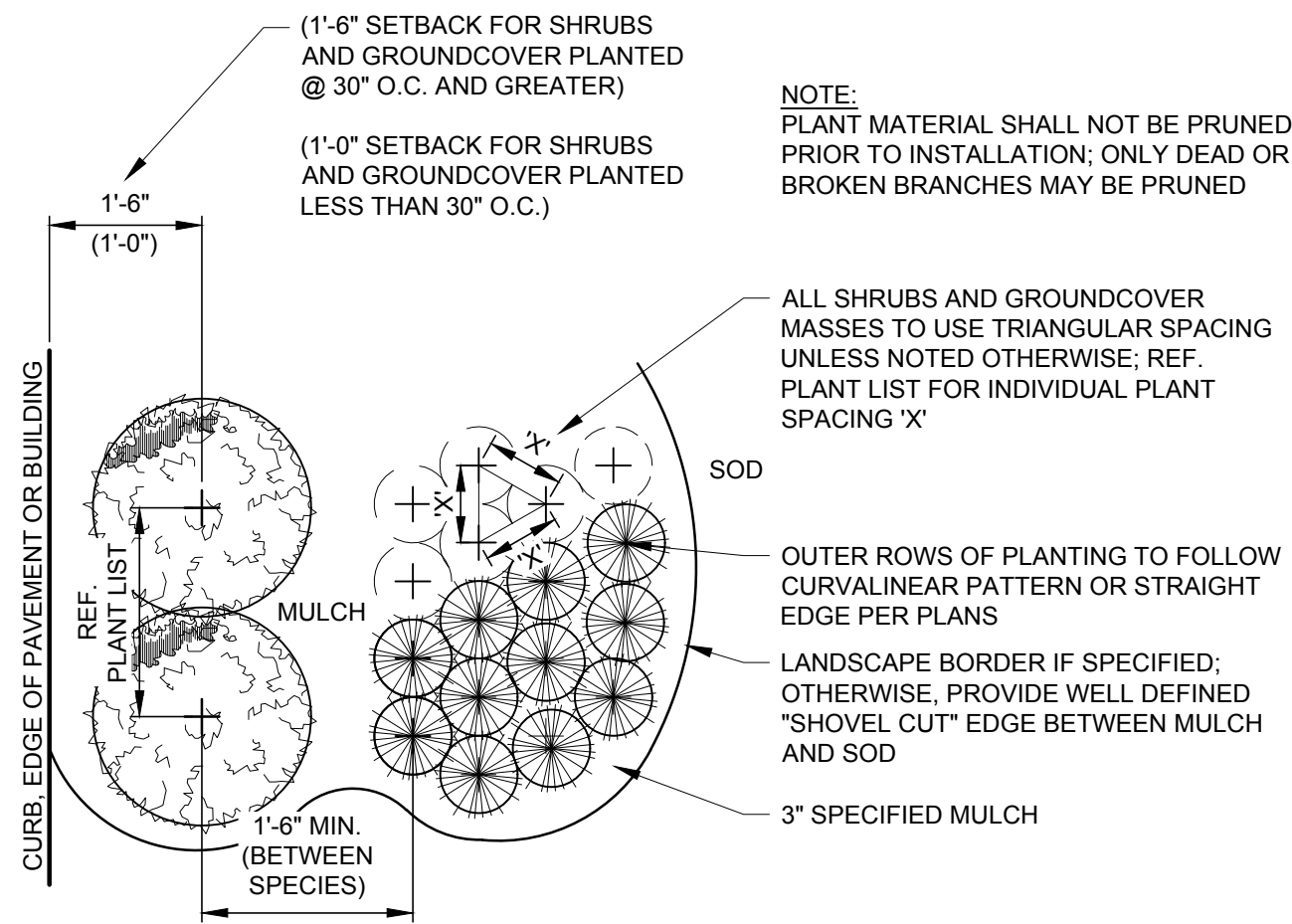
NOT TO SCALE



SHRUB AND GROUNDCOVER PLANTING

SECTION

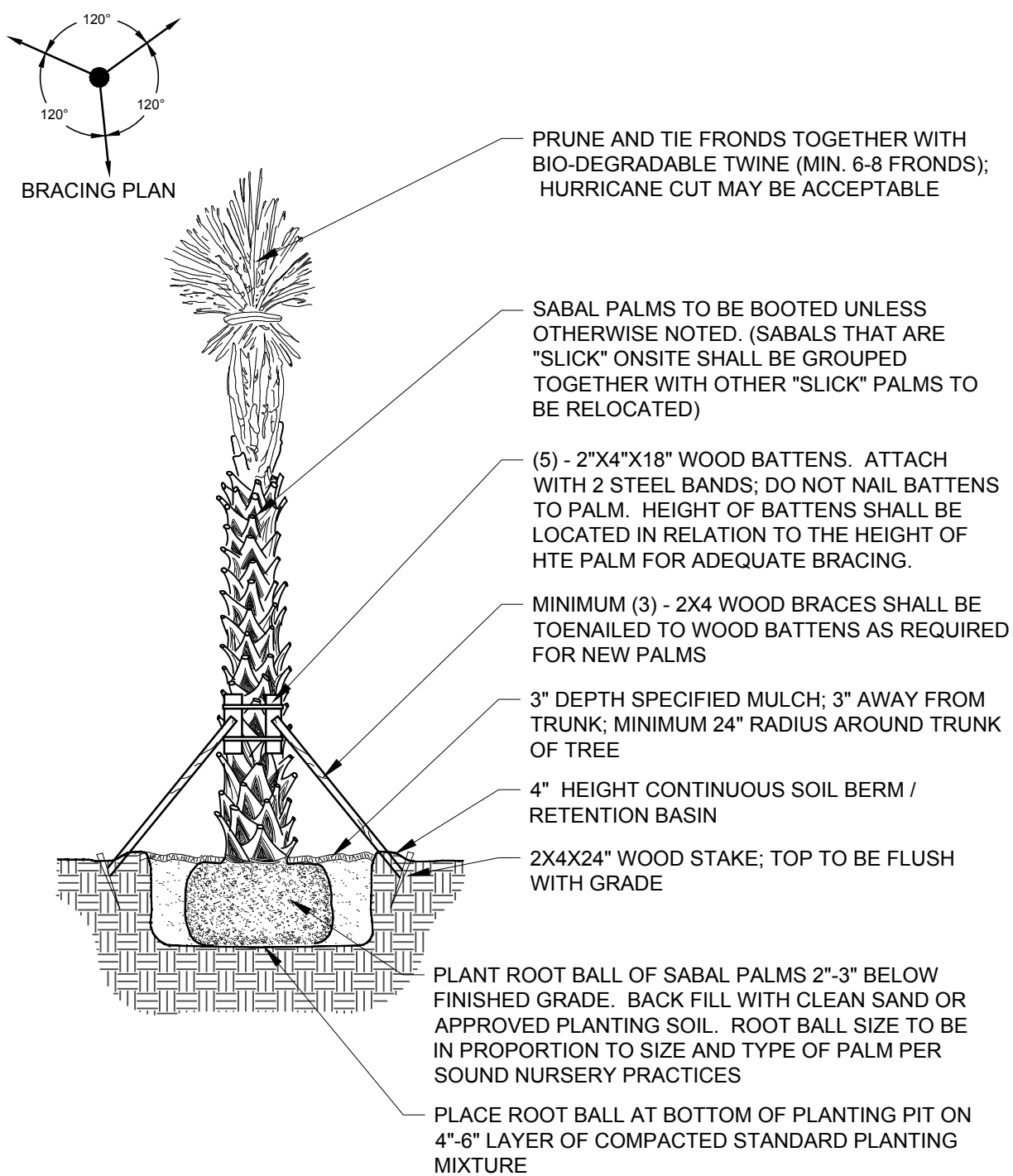
NOT TO SCALE



SHRUB AND GROUNDCOVER PLANTING

PLAN

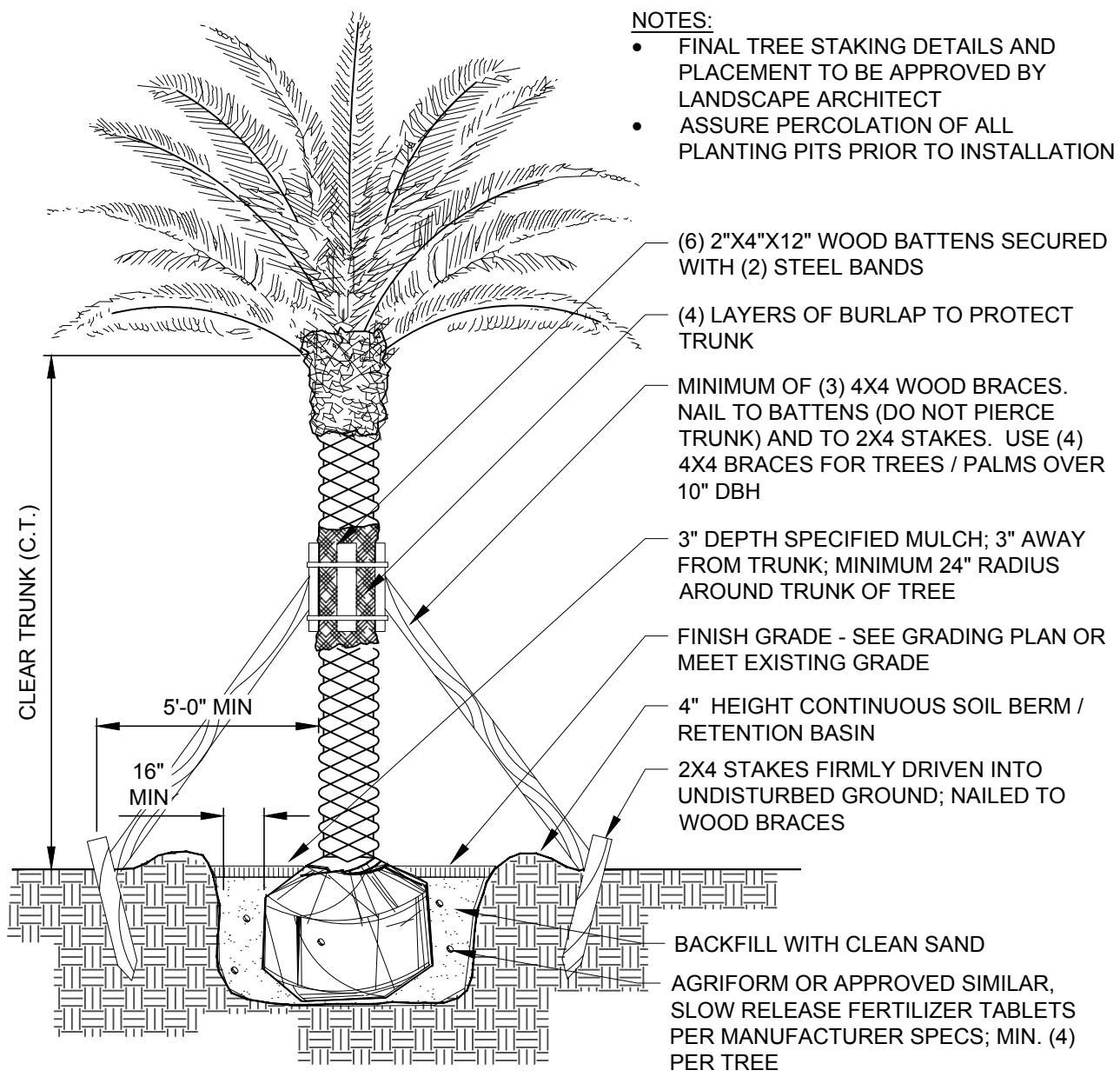
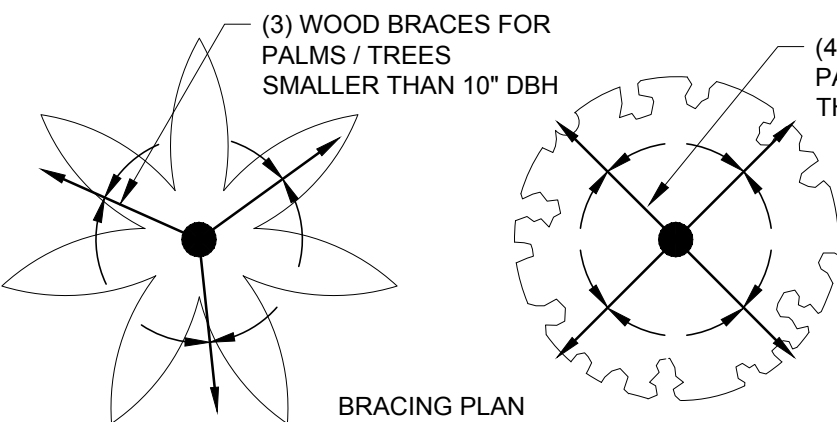
NOT TO SCALE



SABAL PALM PLANTING DETAIL

SECTION

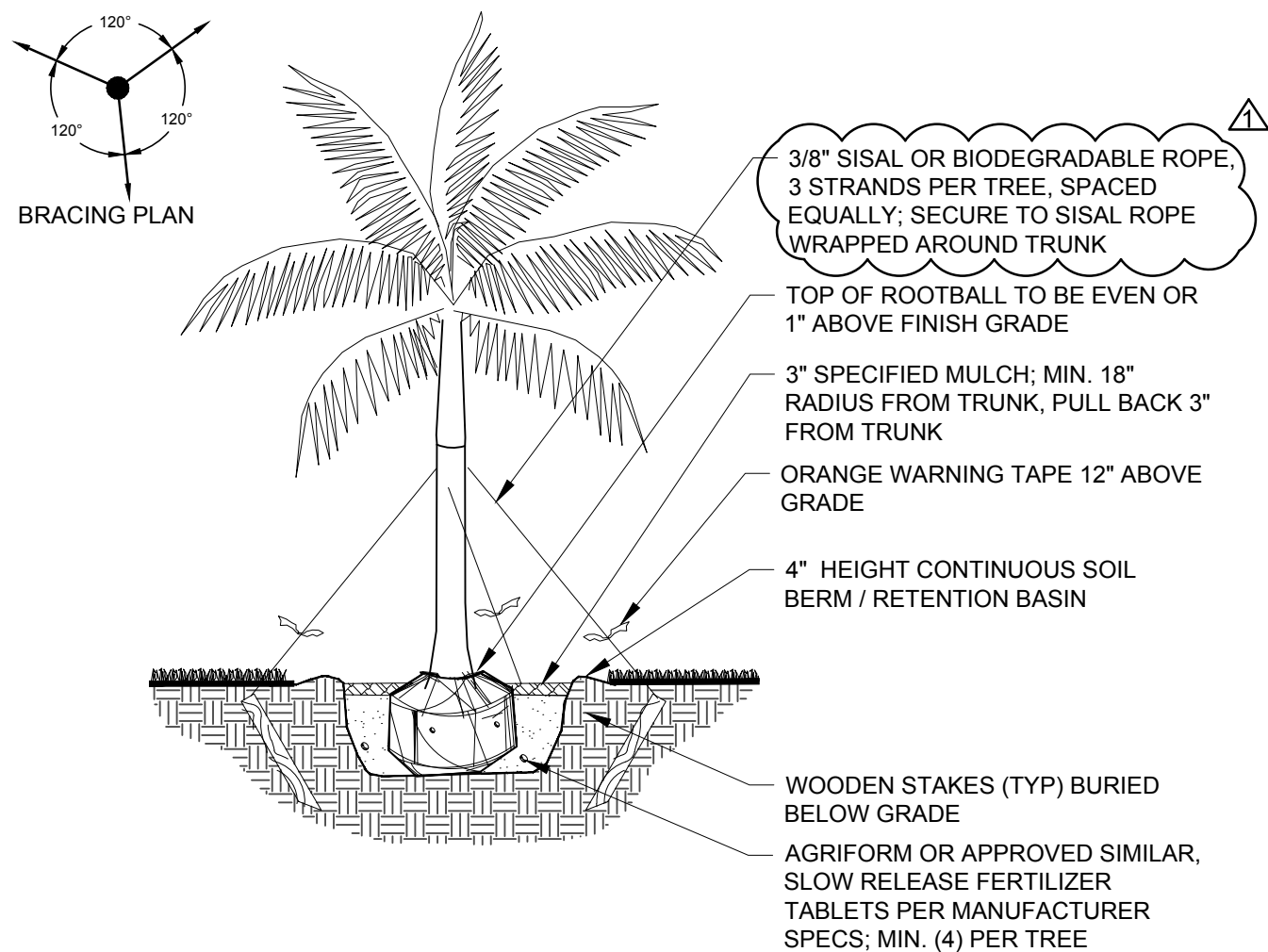
NOT TO SCALE



LARGE TREE / PALM PLANTING DETAIL

SECTION

NOT TO SCALE

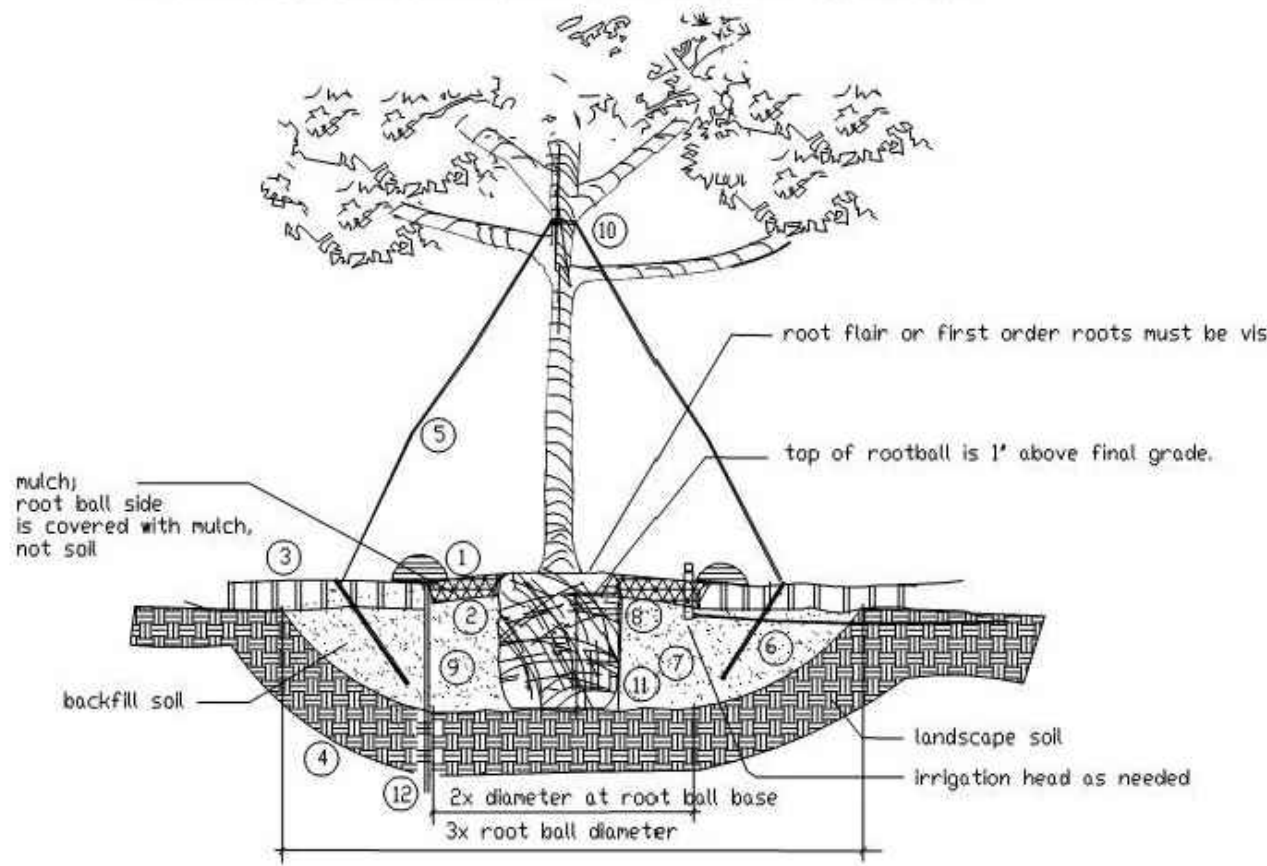


PALM PLANTING DETAIL - SMALL / MEDIUM

SECTION

NOT TO SCALE

- 3" OF CLEAN MULCH IN A 6" DIAMETER RING WITH A 3" HIGH CONTINUOUS WATER EARTH BERM. KEEP MULCH 3" FROM TRUNKS AND STEMS OF ALL VEGETATION. THE USE OF CYPRESS OR RED MULCH IS PROHIBITED.
- PLANTING HOLE SHALL BE TWICE AS WIDE AT THE ROOT BALL AND NO DEEPER THAN THE HEIGHT OF THE ROOT BALL. THE TOP OF THE ROOT BALL SHALL BE APPROXIMATELY 1" ABOVE THE FINISH GRADE. THE TRUNK FLAIR MUST BE VISIBLE ABOVE GRADE.
- FINISH GRADE.
- EXISTING UNDISTURBED SOIL.
- 3 STRANDS OF 3/4" DIAMETER BIODEGRADABLE ROPE TIED TO EACH TREE AND SUPPORTED IN THE GROUND WITH 3- 1" x 2" x 1" BURIED SO TOP IS 1" BELOW GRADE.
- TILL AND LOOSEN SOIL TO A DEPTH OF 8" WITH A RADIUS OF 5' FROM TRUNK OF TREE.
- PLACE SOIL AMENDMENTS (I.E. TERRASORB, FERTILIZER TABLETS) IN THE TOP 8" OF THE PLANTING HOLE.
- REMOVE TOP 1/3 THIRD OF THE NATURAL BURLAP AND WIRE BASKET COMPLETELY. IF WIRE BASKETS CANNOT BE REMOVED DUE TO ROOT BALL STABILITY, SLICE THE BASKET TO THE BOTTOM OF THE ROOT BALL ON A MINIMUM OF 4 SIDES.
- BACK FILL TO BE 50% SAND + 50% MUCK, MIXED WITH 50% EXISTING SOIL UNLESS OTHERWISE NOTED.
- SINGLE DOMINATE LEADER. GOOD STRUCTURE. FLORIDA 1" OR BETTER.
- TILL AND LOOSEN EXISTING SOIL TO A DEPTH OF 8" IN ALL PLANTING BEDS THEN TILL IN 4" OF PLANTING SOIL THROUGHOUT
- ROOT BARRIER SYSTEM AS INDICATED ON THE PLANS IF APPLICABLE.



CITY OF PLANTATION - TREE PLANTING DETAIL

SECTION

NOT TO SCALE



301 East Atlantic Boulevard  
Pompano Beach, Florida 33060-6643

2160 NW 82<sup>nd</sup> Avenue  
Doral, Florida 33122

PH: (954) 788-3400

Florida Certificate of  
Authorization # - 7928

BID / CONTRACT NO. :

REVISIONS

NO.	DESCRIPTION	DATE
Δ	PER DRC COMMENTS	03/06/2019

PRELIMINARY PLAN  
NOT FOR CONSTRUCTION

RESPONSIBILITY FOR THE USE OF THESE PLANS PRIOR TO OBTAINING PERMITS FROM ALL AGENCIES HAVING JURISDICTION OVER THE PROJECT WILL FALL SOLELY UPON THE USER.

INVESCA



PIXL

4400 NW 8th CT  
PLANTATION, FL 33317

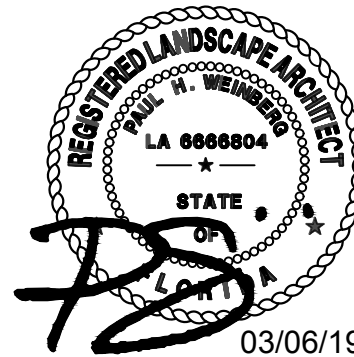
SCALE: AS NOTED

DATE ISSUED: NOVEMBER, 2017

DRAWN BY: SR

DESIGNED BY: PW

CHECKED BY: PW



PAUL WEINBERG, PLA  
FLORIDA REG. NO. LA666804  
(FOR THE FIRM)

SHEET TITLE

LANDSCAPE  
DETAILS

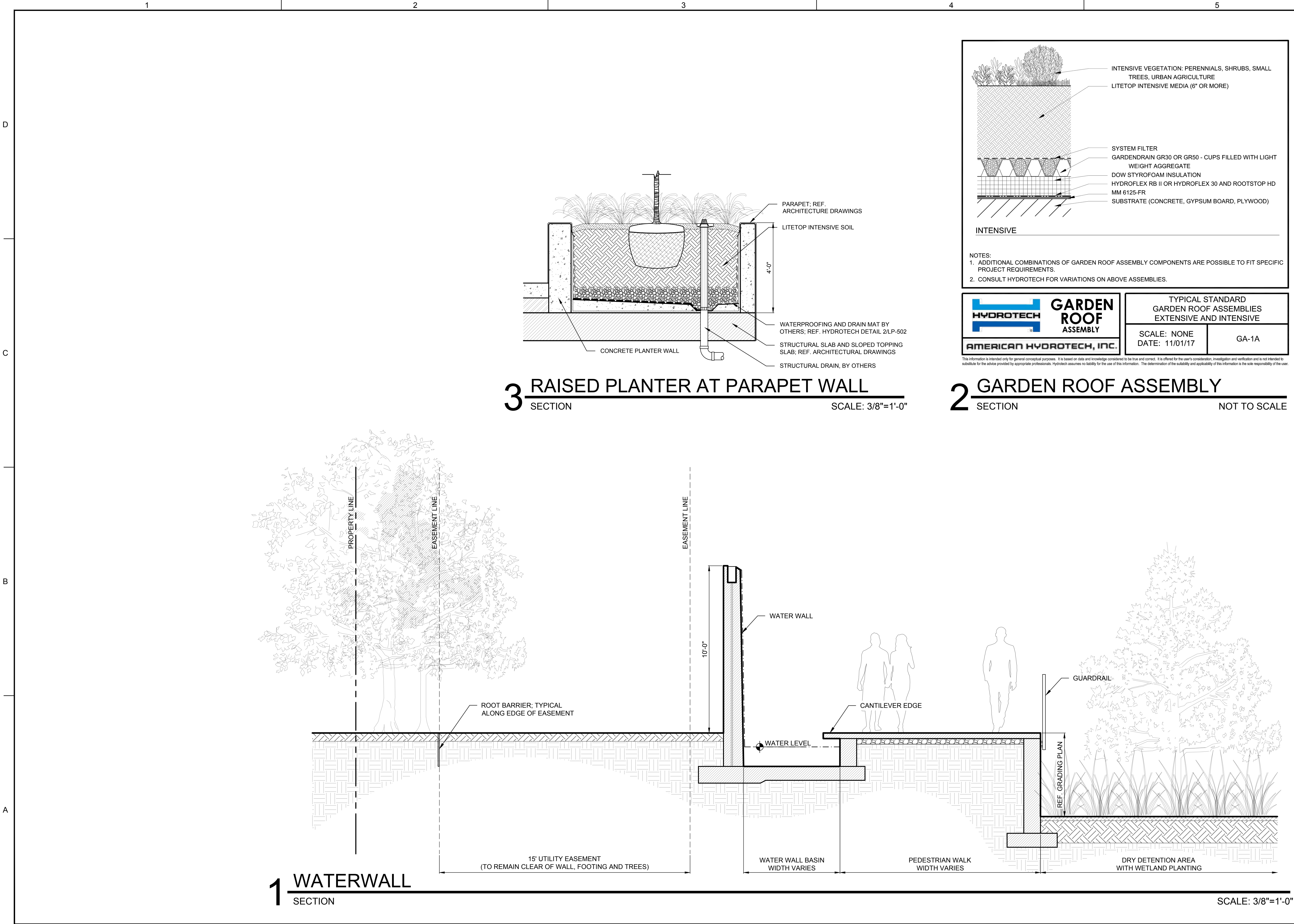
SHEET NUMBER

LP-501

CITY COMMISSION SUBMITTAL

PROJECT NO. 08808.01





301 East Atlantic Boulevard  
Pompano Beach, Florida 33060-6643

2160 NW 82<sup>nd</sup> Avenue  
Doral, Florida 33122

PH: (954) 788-3400

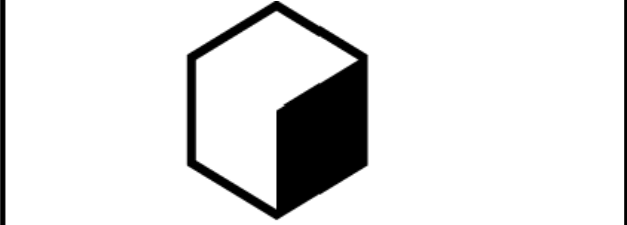
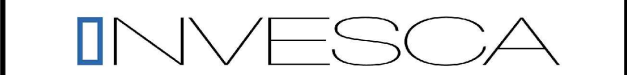
Florida Certificate of  
Authorization # - 7928

BID / CONTRACT NO. :

REVISIONS		
NO.	DESCRIPTION	DATE
Δ	PER DRC COMMENTS	03/06/2019

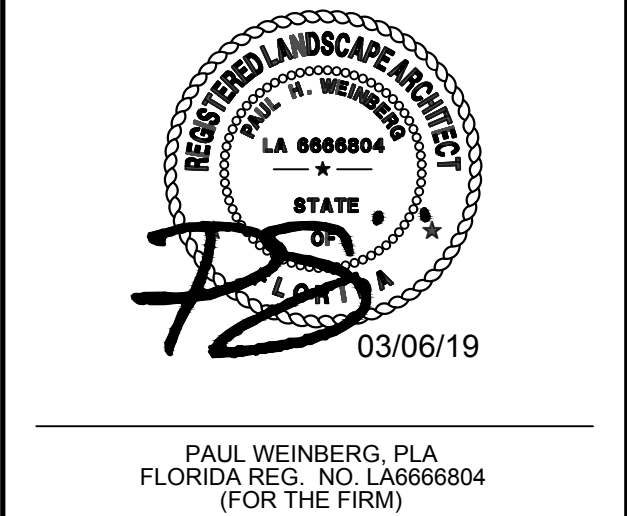
PRELIMINARY PLAN  
NOT FOR CONSTRUCTION

RESPONSIBILITY FOR THE USE OF THESE  
PLANS PRIOR TO OBTAINING PERMITS  
FROM ALL AGENCIES HAVING JURISDICTION  
OVER THE PROJECT WILL FALL SOLELY  
UPON THE USER.



4400 NW 8th CT  
PLANTATION, FL 33317

SCALE:	AS NOTED
DATE ISSUED:	NOVEMBER, 2017
DRAWN BY:	SR
DESIGNED BY:	PW
CHECKED BY:	PW



SHEET TITLE

LANDSCAPE  
DETAILS

SHEET NUMBER  
LP-502

CITY COMMISSION SUBMITTAL

PROJECT NO. 08808.01