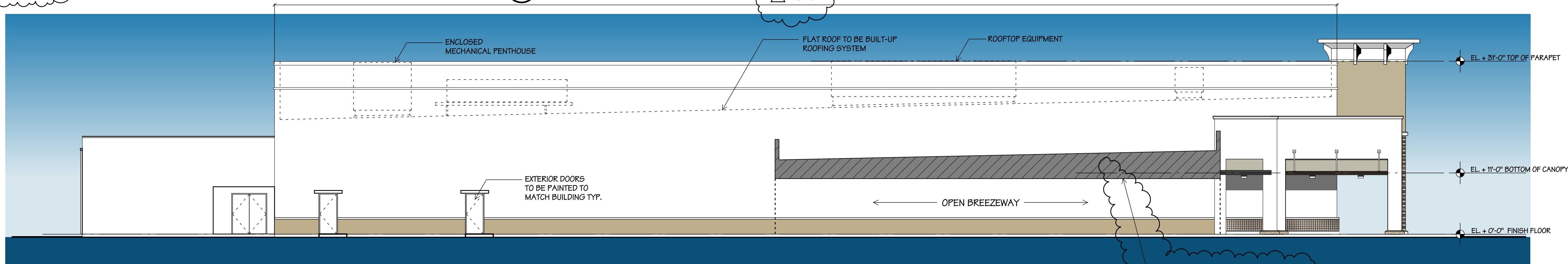


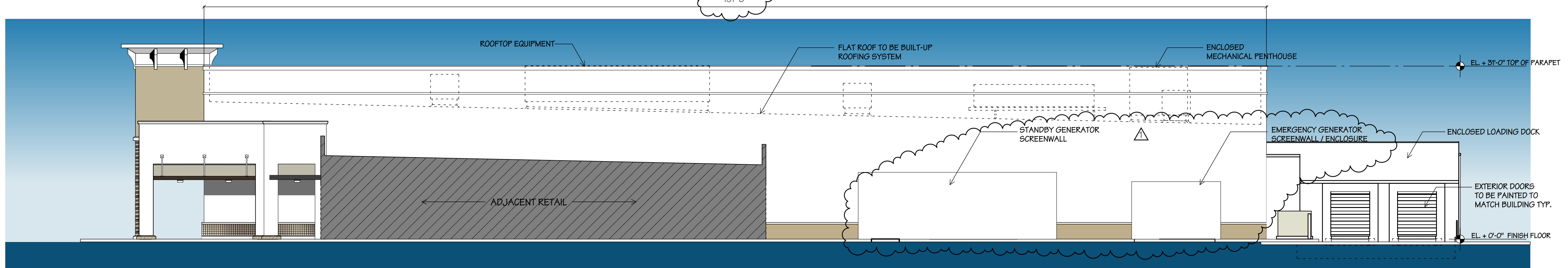
A FRONT ELEVATION

SCALE 3/32" = 1'-0"



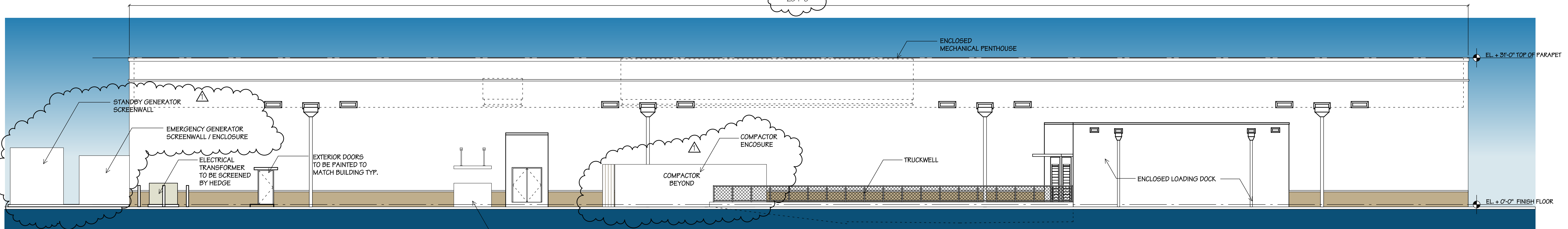
B SIDE ELEVATION

SCALE 3/32" = 1'-0"



C SIDE ELEVATION

SCALE 3/32" = 1'-0"



D REAR ELEVATION

SCALE 3/32" = 1'-0"

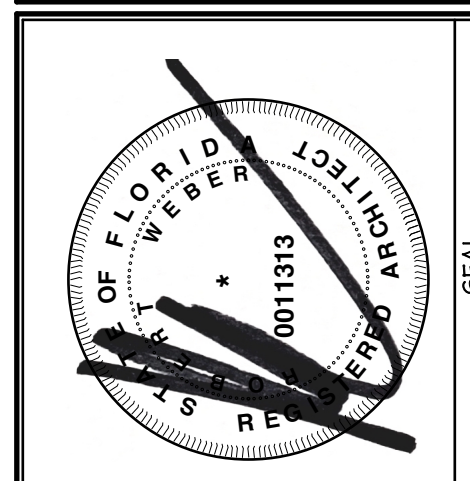
GENERAL NOTES:
OUTDOOR STORAGE IS PROHIBITED

MATERIAL SCHEDULE			
PLANTATION PROMENADE			
MK	Material	Finish	Remarks
1	CEMENT PLASTER	SAND FLOAT / PAINT	
2	EFS BAND	FINE SAND FINISH / PAINT	
3	CASD STONE	COBAL FINISH	
4	TUMBLER MARBLE TILE	2" x 6" RUNNING BOND	TO MATCH EXISTING
5.1	METAL	PRE-FINISHED ALUMINUM	WHITE
5.2	METAL	PRE-FINISHED ALUMINUM	BRONZE
6	ROOF TILE	STYLE TO MATCH EXISTING - PAINT TO MATCH EXISTING	
7	TUMBLER MARBLE TILE	VARIOUS PATTERNS	TO MATCH EXISTING
8.1	ALUMINUM STOREFRONT	CLEAR ANODIZED ALUMINUM W/ IMPACT RATED CLEAR GLASS	
8.2	ALUMINUM STOREFRONT	CLEAR ANODIZED W/ IMPACT RATED SPANDREL GLASS	
9	CEMENT PLASTER W/ PVC JOINTS	SAND FLOAT / PAINT	
10	METAL	PAINT	
11	MANUFACTURED STONE	COUNTRY LEDGESTONE - 'ISOLINE'	CUTURED STONE
12	PRE-ENGINEERED METAL CANOPY SYSTEM	PRE-FINISHED ALUMINUM	
13	EFS BRACKET	FINE SAND FINISH / PAINT	
A	PAINT - WHITE	SW 7000 - IBIS WHITE	SHERWIN WILLIAMS
B	PAINT - OFF-WHITE	SW 6147 - PANDA WHITE	SHERWIN WILLIAMS
C	PAINT - TAN	SW 6141 - SOFTER TAN	SHERWIN WILLIAMS
D	PAINT - GRAY	SW 6170 - TEGINO GRAY	SHERWIN WILLIAMS
E	PAINT - BLACK	SW 7069 IRON ORE	SHERWIN WILLIAMS



MARK	DESCRIPTION	DATE
△	SP COMMENT	9.30.19
△	SP COMMENT	11.27.19
△		
△		
△		
△		
△		
△		

MARC WIENER, AIA
Architecture / Planning
851 S FEDERAL HWY, SUITE 203
BOCA RATON, FLORIDA 33432
O: 561-750-4111
F: 561-750-5298



SOUTHEAST CENTERS, LLC
1541 Sunset Drive,
Suite 300
Coral Gables, FL 33143
Ph: 305.666.2140
Fax: 305.667.1586

PLANTATION PROMENADE
PUBLIX STORE #342 REPLACEMENT
PLANTATION PROMENADE
10065 CLEARY BLVD
PLANTATION, FLORIDA

JOB NUMBER	18071
SCALE	AS NOTED
ISSUE DATE	9.30.19
PERMIT DATE	
BID DATE	

DRAWN BY	
CHECKED BY	MW
DISCIPLINE	ARCHITECTURE
PLAN TYPE	
SHEET NUMBER	AC3.01

18071 - AC 3.01 04 - 1911.27
PLOT : 1911.27

© 2019 MARC WIENER AIA